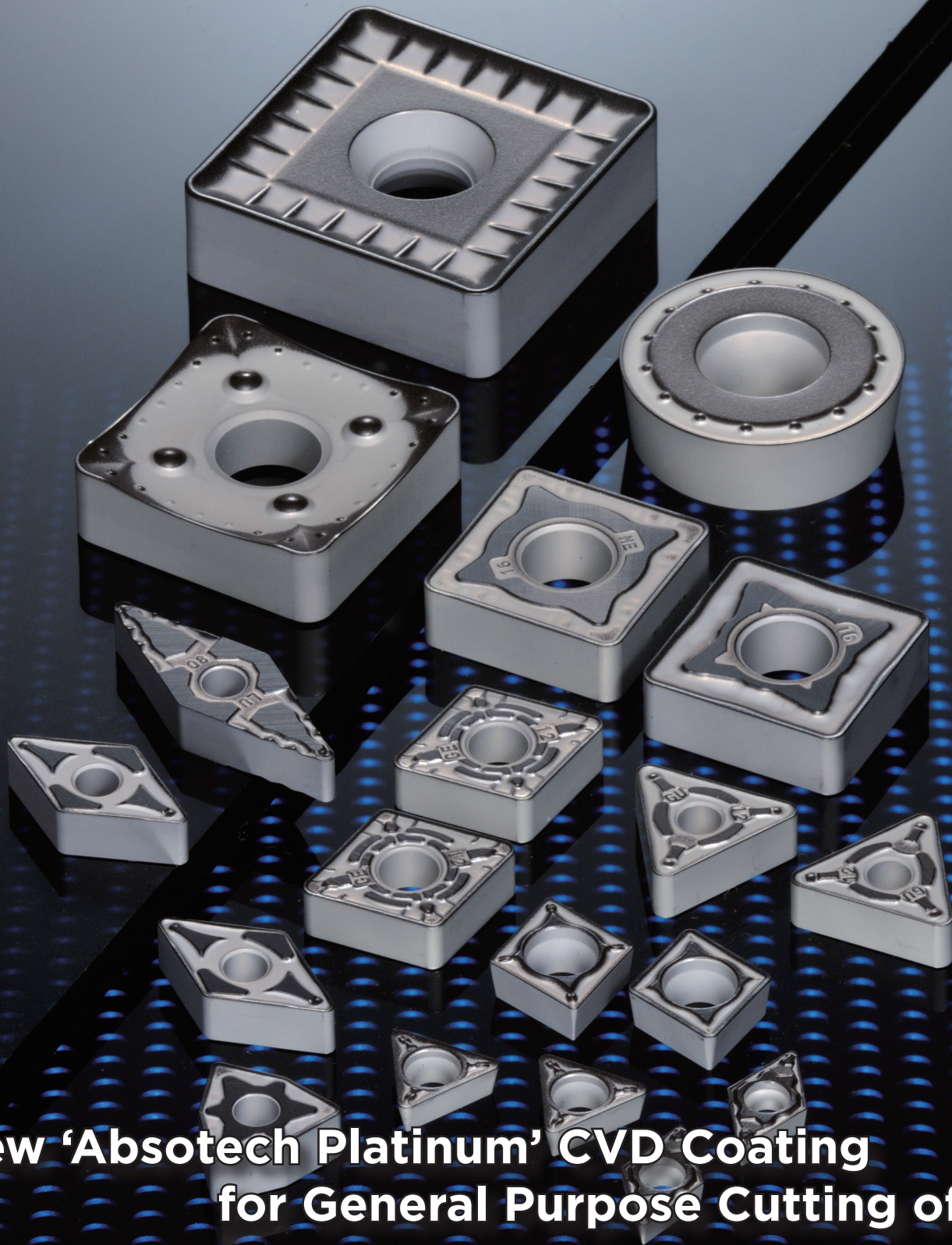


AC8025P Grade for Steel

P



**New 'Absotech Platinum' CVD Coating
for General Purpose Cutting of Steel**

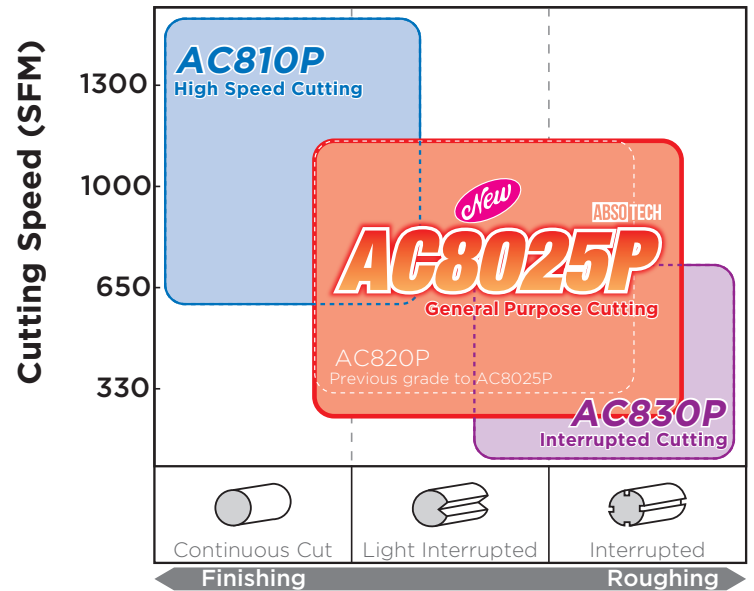
AC8025P



Features & Benefits

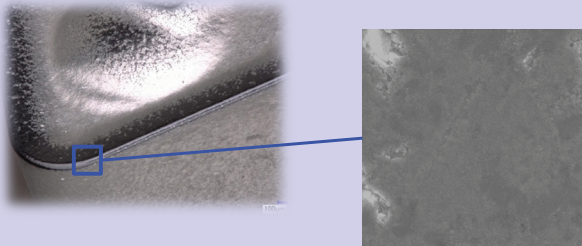
- Sumitomo's new CVD coating, Absotech Platinum, creates high reliability with edge treatment suitable for steel turning.
- New grade yields high adhesion strength, smooth surface treatment and a newly developed high-functional coat with reduced tensile stress that significantly reduces chipping.
- Excellent sharpness of the edge greatly reduces chattering.

Application Range



■ New surface layer

- Excellent adhesion and chipping resistance
- Easily distinguishable used cutting edge

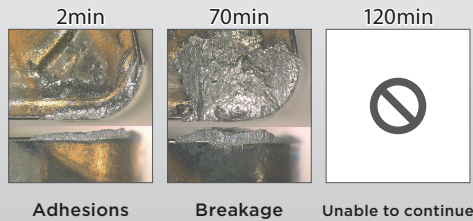


Ra=0.04 μm

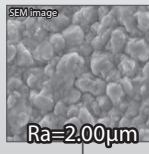
Patented Process

Effect of smooth surface (Adhesion resistance)

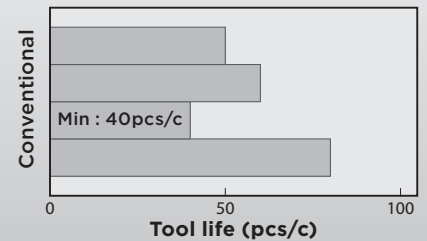
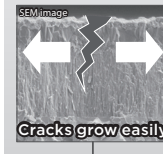
Conventional Grade



Work Material : 4115 Steel (Facing)
Insert : CNMG432EGU
Cutting Conditions : $v_c=330-1000$ SFM $f=0.012$ IPR
 $a_p=0.059''$ Wet

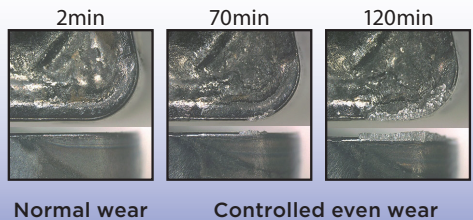


Effect of special surface layer (Chipping resistance)

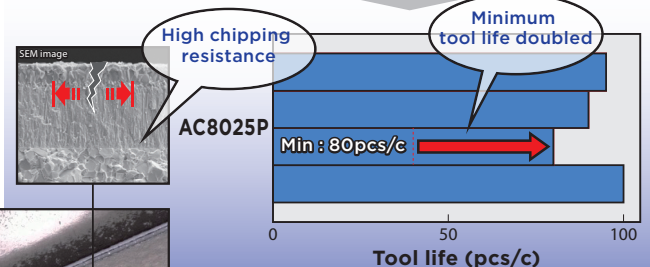
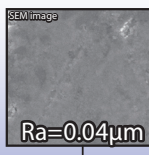


Work Material : 1049 Steel Hub
Insert : CNMG433EGU
Cutting Conditions : $v_c=600$ SFM $f=0.012$ IPR
 $a_p=0.0197''$ Wet

AC8025P



Extremely smooth surface → Resists adhesions



longer and more stable tool life → Predictable tool life

AC8025P Availability - Negative Inserts

| CNMG 80° Diamond/Negative | | | | | |
|---------------------------|---------|------------------|-----------|-------------|----------------------|
| Sumitomo Catalog Number | AC8025P | Inscribed Circle | Thickness | Nose Radius | Insert Hole Diameter |
| CNMG431EEG | ● | .500 | .1875 | .0156 | .2031 |
| CNMG432EEG | ● | .500 | .1875 | .0313 | .2031 |
| CNMG433EEG | ● | .500 | .1875 | .0469 | .2031 |
| CNMG543EEG | ● | .625 | .250 | .0469 | .250 |
| CNMG643EEG | ● | .750 | .250 | .0469 | .3126 |
| CNMG432EEM | ● | .500 | .1875 | .0313 | .2031 |
| CNMG433EEM | ● | .500 | .1875 | .0469 | .2031 |
| CNMG543EEM | ● | .625 | .250 | .0469 | .250 |
| CNMG643EEM | ● | .750 | .250 | .0469 | .3126 |
| CNMG431EFL | ● | .500 | .1875 | .0156 | .2031 |
| CNMG432EFL | ● | .500 | .1875 | .0313 | .2031 |
| CNMG431EGE | ● | .500 | .1875 | .0156 | .2031 |
| CNMG432EGE | ● | .500 | .1875 | .0313 | .2031 |
| CNMG433EGE | ● | .500 | .1875 | .0469 | .2031 |
| CNMG434EGE | ● | .500 | .1875 | .0625 | .2031 |
| CNMG542EGE | ● | .625 | .250 | .0313 | .250 |
| CNMG543EGE | ● | .625 | .250 | .0469 | .250 |
| CNMG643EGE | ● | .750 | .250 | .0469 | .3126 |
| CNMG644EGE | ● | .750 | .250 | .0625 | .3126 |
| CNMG322EGU | ● | .375 | .125 | .0313 | .150 |
| CNMG431EGU | ● | .500 | .1875 | .0156 | .2031 |
| CNMG432EGU | ● | .500 | .1875 | .0313 | .2031 |
| CNMG433EGU | ● | .500 | .1875 | .0469 | .2031 |
| CNMG542EGU | ● | .625 | .250 | .0313 | .250 |
| CNMG543EGU | ● | .625 | .250 | .0469 | .250 |
| CNMG432EGUW | ● | .500 | .1875 | .0313 | .2031 |
| CNMG433EGUW | ● | .500 | .1875 | .0469 | .2031 |
| CNMG543EGUW | ● | .625 | .250 | .0469 | .250 |
| CNMG431ELU | ● | .500 | .1875 | .0156 | .2031 |
| CNMG432ELU | ● | .500 | .1875 | .0313 | .2031 |
| CNMG433ELU | ● | .500 | .1875 | .0469 | .2031 |
| CNMG431ELUW | ● | .500 | .1875 | .0156 | .2031 |
| CNMG432ELUW | ● | .500 | .1875 | .0313 | .2031 |
| CNMG433ELUW | ● | .500 | .1875 | .0469 | .2031 |
| CNMG432EME | ● | .500 | .1875 | .0313 | .2031 |
| CNMG433EME | ● | .500 | .1875 | .0469 | .2031 |
| CNMG434EME | ● | .500 | .1875 | .0625 | .2031 |
| CNMG542EME | ● | .625 | .250 | .0313 | .250 |
| CNMG543EME | ● | .625 | .250 | .0469 | .250 |
| CNMG544EME | ● | .625 | .250 | .0625 | .250 |
| CNMG643EME | ● | .750 | .250 | .0469 | .3126 |
| CNMG644EME | ● | .750 | .250 | .0625 | .3126 |
| CNMG866EME | ● | 1.00 | .375 | .0938 | .3622 |
| CNMG432EMU | ● | .500 | .1875 | .0313 | .2031 |
| CNMG433EMU | ● | .500 | .1875 | .0469 | .2031 |
| CNMG434EMU | ● | .500 | .1875 | .0625 | .2031 |
| CNMG542EMU | ● | .625 | .250 | .0313 | .250 |
| CNMG543EMU | ● | .625 | .250 | .0469 | .250 |
| CNMG544EMU | ● | .625 | .250 | .0625 | .250 |
| CNMG643EMU | ● | .750 | .250 | .0469 | .3126 |
| CNMG644EMU | ● | .750 | .250 | .0625 | .3126 |
| CNMG866EMU | ● | 1.00 | .375 | .0938 | .3622 |

| CNMG 80° Diamond/Negative | | | | | |
|---------------------------|---------|------------------|-----------|-------------|----------------------|
| Sumitomo Catalog Number | AC8025P | Inscribed Circle | Thickness | Nose Radius | Insert Hole Diameter |
| CNMG432EMX | ● | .500 | .1875 | .0313 | .2031 |
| CNMG433EMX | ● | .500 | .1875 | .0469 | .2031 |
| CNMG434EMX | ● | .500 | .1875 | .0625 | .2031 |
| CNMG542EMX | ● | .625 | .250 | .0313 | .250 |
| CNMG543EMX | ● | .625 | .250 | .0469 | .250 |
| CNMG544EMX | ● | .625 | .250 | .0625 | .250 |
| CNMG643EMX | ● | .750 | .250 | .0469 | .3126 |
| CNMG644EMX | ● | .750 | .250 | .0625 | .3126 |
| CNMG322ENG | ● | .375 | .125 | .0313 | .150 |
| CNMG431ENG | ● | .500 | .1875 | .0156 | .2031 |
| CNMG432ENG | ● | .500 | .1875 | .0313 | .2031 |
| CNMG433ENG | ● | .500 | .1875 | .0469 | .2031 |
| CNMG542ENG | ● | .625 | .250 | .0313 | .250 |
| CNMG543ENG | ● | .625 | .250 | .0469 | .250 |
| CNMG642ENG | ● | .750 | .250 | .0313 | .3126 |
| CNMG643ENG | ● | .750 | .250 | .0469 | .3126 |
| CNMG644ENG | ● | .750 | .250 | .0625 | .3126 |
| CNMG432ENZ | ● | .500 | .1875 | .0313 | .2031 |
| CNMG542ENZ | ● | .625 | .250 | .0313 | .250 |
| CNMG543ENZ | ● | .625 | .250 | .0469 | .250 |
| CNMG642ENZ | ● | .750 | .250 | .0313 | .3126 |
| CNMG643ENZ | ● | .750 | .250 | .0469 | .3126 |
| CNMG644ENZ | ● | .750 | .250 | .0625 | .3126 |
| CNMG431ESE | ● | .500 | .1875 | .0156 | .2031 |
| CNMG432ESE | ● | .500 | .1875 | .0313 | .2031 |
| CNMG433ESE | ● | .500 | .1875 | .0469 | .2031 |
| CNMG431ESEW | ● | .500 | .1875 | .0156 | .2031 |
| CNMG432ESEW | ● | .500 | .1875 | .0313 | .2031 |
| CNMG433ESEW | ● | .500 | .1875 | .0469 | .2031 |
| CNMG431ESU | ● | .500 | .1875 | .0156 | .2031 |
| CNMG432ESU | ● | .500 | .1875 | .0313 | .2031 |
| CNMG433ESU | ● | .500 | .1875 | .0469 | .2031 |
| CNMG431ESX | ● | .500 | .1875 | .0156 | .2031 |
| CNMG432ESX | ● | .500 | .1875 | .0313 | .2031 |
| CNMG433ESX | ● | .500 | .1875 | .0469 | .2031 |
| CNMG431EUP | ● | .500 | .1875 | .0156 | .2031 |
| CNMG432EUP | ● | .500 | .1875 | .0313 | .2031 |
| CNMG542EUP | ● | .625 | .250 | .0313 | .250 |
| CNMG543EUP | ● | .625 | .250 | .0469 | .250 |
| CNMG431EUX | ● | .500 | .1875 | .0156 | .2031 |
| CNMG432EUX | ● | .500 | .1875 | .0313 | .2031 |
| CNMG433EUX | ● | .500 | .1875 | .0469 | .2031 |
| CNMG434EUX | ● | .500 | .1875 | .0625 | .2031 |
| CNMG542EUX | ● | .625 | .250 | .0313 | .250 |
| CNMG543EUX | ● | .625 | .250 | .0469 | .250 |
| CNMG643EUX | ● | .750 | .250 | .0469 | .3126 |

| DNMG 55° Diamond/Negative | | | | | |
|---------------------------|---------|------------------|-----------|-------------|----------------------|
| Sumitomo Catalog Number | AC8025P | Inscribed Circle | Thickness | Nose Radius | Insert Hole Diameter |
| DNMG431EEG | ● | .500 | .1875 | .0156 | .2031 |
| DNMG432EEG | ● | .500 | .1875 | .0313 | .2031 |
| DNMG432EEM | ● | .500 | .1875 | .0313 | .2031 |
| DNMG431EFL | ● | .500 | .1875 | .0156 | .2031 |
| DNMG432EFL | ● | .500 | .1875 | .0313 | .2031 |
| DNMG332EGE | ● | .375 | .1875 | .0313 | .150 |
| DNMG333EGE | ● | .375 | .1875 | .0469 | .150 |
| DNMG431EGE | ● | .500 | .1875 | .0156 | .2031 |
| DNMG432EGE | ● | .500 | .1875 | .0313 | .2031 |
| DNMG433EGE | ● | .500 | .1875 | .0469 | .2031 |
| DNMG331EGU | ● | .375 | .1875 | .0156 | .150 |
| DNMG332EGU | ● | .375 | .1875 | .0313 | .150 |
| DNMG431EGU | ● | .500 | .1875 | .0156 | .2031 |
| DNMG432EGU | ● | .500 | .1875 | .0313 | .2031 |
| DNMG433EGU | ● | .500 | .1875 | .0469 | .2031 |
| DNMG331ELU | ● | .375 | .1875 | .0156 | .2031 |
| DNMG332ELU | ● | .375 | .1875 | .0313 | .2031 |
| DNMG431ELU | ● | .500 | .1875 | .0156 | .2031 |
| DNMG432ELU | ● | .500 | .1875 | .0313 | .2031 |
| DNMG432EME | ● | .500 | .1875 | .0313 | .2031 |
| DNMG433EME | ● | .500 | .1875 | .0469 | .2031 |
| DNMG432EMU | ● | .500 | .1875 | .0313 | .2031 |
| DNMG433EMU | ● | .500 | .1875 | .0469 | .2031 |
| DNMG432EMX | ● | .500 | .1875 | .0313 | .2031 |
| DNMG433EMX | ● | .500 | .1875 | .0469 | .2031 |
| DNMG331ENG | ● | .375 | .1875 | .0156 | .150 |
| DNMG332ENG | ● | .375 | .1875 | .0313 | .150 |
| DNMG431ENG | ● | .500 | .1875 | .0156 | .2031 |
| DNMG432ENG | ● | .500 | .1875 | .0313 | .2031 |
| DNMG542ENG | ● | .625 | .250 | .0313 | .250 |
| DNMG543ENG | ● | .625 | .250 | .0469 | .250 |
| DNMG432ENZ | ● | .500 | .1875 | .0313 | .2031 |
| DNMG433ENZ | ● | .500 | .1875 | .0469 | .2031 |
| DNMG542ENZ | ● | .625 | .250 | .0313 | .250 |
| DNMG543ENZ | ● | .625 | .250 | .0469 | .250 |
| DNMG544ENZ | ● | .625 | .250 | .0625 | .250 |
| DNMG332ESE | ● | .375 | .1875 | .0313 | .150 |
| DNMG432ESE | ● | .500 | .1875 | .0313 | .2031 |
| DNMG433ESE | ● | .500 | .1875 | .0469 | .2031 |
| DNMG331ESU | ● | .375 | .1875 | .0156 | .150 |
| DNMG332ESU | ● | .375 | .1875 | .0313 | .150 |
| DNMG333ESU | ● | .375 | .1875 | .0469 | .150 |
| DNMG431ESU | ● | .500 | .1875 | .0156 | .2031 |
| DNMG432ESU | ● | .500 | .1875 | .0313 | .2031 |
| DNMG433ESU | ● | .500 | .1875 | .0469 | .2031 |
| DNMG431ESX | ● | .500 | .1875 | .0156 | .2031 |
| DNMG432ESX | ● | .500 | .1875 | .0313 | .2031 |
| DNMG431EUP | ● | .500 | .1875 | .0156 | .2031 |
| DNMG432EUP | ● | .500 | .1875 | .0313 | .2031 |
| DNMG431EUX | ● | .500 | .1875 | .0156 | .2031 |
| DNMG432EUX | ● | .500 | .1875 | .0313 | .2031 |
| DNMG433EUX | ● | .500 | .1875 | .0469 | .2031 |

| DNMX 55° Diamond/Negative | | | | | |
|---------------------------|---------|------------------|-----------|-------------|----------------------|
| Sumitomo Catalog Number | AC8025P | Inscribed Circle | Thickness | Nose Radius | Insert Hole Diameter |
| DNMX332ESEW | ● | .375 | .1875 | .0313 | .150 |
| DNMX431ESEW | ● | .500 | .1875 | .0156 | .2031 |
| DNMX432ESEW | ● | .500 | .1875 | .0313 | .2031 |

See next page for negative inserts availability continued

AC8025P Availability - Negative Inserts Cont'd

| SNMG 90° Square/Negative | | | | | |
|--------------------------|--------------------------|-----------|-------------|----------------------|--|
| Sumitomo Catalog Number | AC8025P Inscribed Circle | Thickness | Nose Radius | Insert Hole Diameter | |
| SNMG432EEG | ● .500 | .1875 | .0313 | .2031 | |
| SNMG432EEM | ● .500 | .1875 | .0313 | .2031 | |
| SNMG432EFL | ● .500 | .1875 | .0313 | .2031 | |
| SNMG432EGE | ● .500 | .1875 | .0313 | .2031 | |
| SNMG434EGE | ● .500 | .1875 | .0625 | .2031 | |
| SNMG544EGE | ● .625 | .250 | .0625 | .250 | |
| SNMG321EGU | ● .375 | .125 | .0156 | .150 | |
| SNMG431EGU | ● .500 | .1875 | .0156 | .2031 | |
| SNMG432EGU | ● .500 | .1875 | .0313 | .2031 | |
| SNMG433EGU | ● .500 | .1875 | .0469 | .2031 | |
| SNMG434EGU | ● .500 | .1875 | .0625 | .2031 | |
| SNMG543EGU | ● .625 | .250 | .0469 | .250 | |
| SNMG432EME | ● .500 | .1875 | .0313 | .2031 | |
| SNMG433EME | ● .500 | .1875 | .0469 | .2031 | |
| SNMG434EME | ● .500 | .1875 | .0625 | .2031 | |
| SNMG543EME | ● .625 | .250 | .0469 | .250 | |
| SNMG544EME | ● .625 | .250 | .0625 | .250 | |
| SNMG643EME | ● .750 | .250 | .0469 | .3126 | |
| SNMG644EME | ● .750 | .250 | .0625 | .3126 | |
| SNMG866EME | ● 1.00 | .375 | .0938 | .3622 | |
| SNMG432EMU | ● .500 | .1875 | .0313 | .2031 | |
| SNMG433EMU | ● .500 | .1875 | .0469 | .2031 | |
| SNMG434EMU | ● .500 | .1875 | .0625 | .2031 | |
| SNMG543EMU | ● .625 | .250 | .0469 | .250 | |
| SNMG544EMU | ● .625 | .250 | .0625 | .250 | |
| SNMG643EMU | ● .750 | .250 | .0469 | .250 | |
| SNMG644EMU | ● .750 | .250 | .0625 | .250 | |
| SNMG433EMX | ● .500 | .1875 | .0469 | .2031 | |
| SNMG434EMX | ● .500 | .1875 | .0625 | .2031 | |
| SNMG543EMX | ● .625 | .250 | .0469 | .250 | |
| SNMG544EMX | ● .625 | .250 | .0625 | .250 | |
| SNMG643EMX | ● .750 | .250 | .0469 | .3126 | |
| SNMG644EMX | ● .750 | .250 | .0625 | .3126 | |
| SNMG322ENG | ● .375 | .125 | .0313 | .150 | |
| SNMG432ENG | ● .500 | .1875 | .0313 | .2031 | |
| SNMG543ENG | ● .625 | .250 | .0469 | .250 | |
| SNMG643ENG | ● .750 | .250 | .0469 | .3126 | |
| SNMG644ENG | ● .750 | .250 | .0625 | .3126 | |
| SNMG432ENZ | ● .500 | .1875 | .0313 | .2031 | |
| SNMG432ESE | ● .500 | .1875 | .0313 | .2031 | |
| SNMG432ESU | ● .500 | .1875 | .0313 | .2031 | |
| SNMG432ESX | ● .500 | .1875 | .0313 | .2031 | |
| SNMG432EUP | ● .500 | .1875 | .0313 | .2031 | |
| SNMG432EUX | ● .500 | .1875 | .0313 | .2031 | |
| SNMG433EUX | ● .500 | .1875 | .0469 | .2031 | |
| SNMG434EUX | ● .500 | .1875 | .0625 | .2031 | |
| SNMG643EUX | ● .750 | .250 | .0469 | .3126 | |
| SNMG644EUX | ● .750 | .250 | .0625 | .3126 | |
| SNMG866EMU | ● 1.00 | .375 | .0938 | .3622 | |
| SNMG866ENG | ● 1.00 | .375 | .0938 | .3622 | |

● = USA Stocked item

| TNMG Triangle/Negative | | | | | |
|-------------------------|--------------------------|-----------|-------------|----------------------|--|
| Sumitomo Catalog Number | AC8025P Inscribed Circle | Thickness | Nose Radius | Insert Hole Diameter | |
| TNMG331EEG | ● .375 | .1875 | .0156 | .150 | |
| TNMG332EEG | ● .375 | .1875 | .0313 | .150 | |
| TNMG332EEM | ● .375 | .1875 | .0313 | .150 | |
| TNMG331EFL | ● .375 | .1875 | .0156 | .150 | |
| TNMG332EFL | ● .375 | .1875 | .0313 | .150 | |
| TNMG331EGE | ● .375 | .1875 | .0156 | .150 | |
| TNMG332EGE | ● .375 | .1875 | .0313 | .150 | |
| TNMG333EGE | ● .375 | .1875 | .0469 | .150 | |
| TNMG432EGE | ● .500 | .1875 | .0313 | .2031 | |
| TNMG433EGE | ● .500 | .1875 | .0469 | .2031 | |
| TNMG331EGU | ● .375 | .1875 | .0156 | .150 | |
| TNMG332EGU | ● .375 | .1875 | .0313 | .150 | |
| TNMG333EGU | ● .375 | .1875 | .0469 | .150 | |
| TNMG431EGU | ● .500 | .1875 | .0156 | .2031 | |
| TNMG432EGU | ● .500 | .1875 | .0313 | .2031 | |
| TNMG433EGU | ● .500 | .1875 | .0469 | .2031 | |
| TNMG331ELU | ● .375 | .1875 | .0156 | .150 | |
| TNMG332ELU | ● .375 | .1875 | .0313 | .150 | |
| TNMG333ELU | ● .375 | .1875 | .0469 | .150 | |
| TNMG332EMX | ● .375 | .1875 | .0313 | .150 | |
| TNMG432EMX | ● .500 | .1875 | .0313 | .2031 | |
| TNMG433EMX | ● .500 | .1875 | .0469 | .2031 | |
| TNMG434EMX | ● .500 | .1875 | .0625 | .2031 | |
| TNMG332EMU | ● .375 | .150 | .0313 | .150 | |
| TNMG432EMU | ● .500 | .1875 | .0313 | .2031 | |
| TNMG433EMU | ● .500 | .1875 | .0469 | .2031 | |
| TNMG434EMU | ● .500 | .1875 | .0625 | .2031 | |
| TNMG543EMU | ● .625 | .250 | .0469 | .250 | |
| TNMG544EMU | ● .625 | .250 | .0625 | .250 | |
| TNMG432EMX | ● .500 | .1875 | .0313 | .2031 | |
| TNMG321ENG | ● .375 | .125 | .0156 | .150 | |
| TNMG322ENG | ● .375 | .125 | .0313 | .150 | |
| TNMG332ENG | ● .375 | .1875 | .0313 | .150 | |
| TNMG432ENG | ● .500 | .1875 | .0313 | .2031 | |
| TNMG433ENG | ● .500 | .1875 | .0469 | .2031 | |
| TNMG542ENG | ● .625 | .250 | .0313 | .250 | |
| TNMG543ENG | ● .625 | .250 | .0469 | .250 | |
| TNMG544ENG | ● .625 | .250 | .0625 | .250 | |
| TNMG666ENG | ● .750 | .375 | .0938 | .3126 | |
| TNMG332ENZ | ● .375 | .1875 | .0313 | .150 | |
| TNMG432ENZ | ● .500 | .1875 | .0313 | .2031 | |
| TNMG434ENZ | ● .500 | .1875 | .0625 | .2031 | |
| TNMG542ENZ | ● .625 | .250 | .0313 | .250 | |
| TNMG543ENZ | ● .625 | .250 | .0469 | .250 | |
| TNMG544ENZ | ● .625 | .250 | .0625 | .250 | |
| TNMG666ENZ | ● .750 | .375 | .0938 | .3126 | |
| TNMG331ESE | ● .375 | .1875 | .0156 | .150 | |
| TNMG332ESE | ● .375 | .1875 | .0313 | .150 | |
| TNMG321ESU | ● .375 | .125 | .0156 | .150 | |
| TNMG322ESU | ● .375 | .125 | .0313 | .150 | |
| TNMG331ESU | ● .375 | .1875 | .0156 | .150 | |
| TNMG332ESU | ● .375 | .1875 | .0313 | .150 | |
| TNMG333ESU | ● .375 | .1875 | .0469 | .150 | |
| TNMG321ESX | ● .375 | .125 | .0156 | .150 | |
| TNMG322ESX | ● .375 | .125 | .0313 | .150 | |
| TNMG332ESX | ● .375 | .1875 | .0313 | .150 | |
| TNMG431ESX | ● .500 | .1875 | .0156 | .2031 | |
| TNMG432ESX | ● .500 | .1875 | .0313 | .2031 | |
| TNMG433ESX | ● .500 | .1875 | .0469 | .2031 | |

| TNMG Triangle/Negative- Cont'd | | | | | |
|--------------------------------|--------------------------|-----------|-------------|----------------------|--|
| Sumitomo Catalog Number | AC8025P Inscribed Circle | Thickness | Nose Radius | Insert Hole Diameter | |
| TNMG331EUP | ● .375 | .1875 | .0156 | .150 | |
| TNMG332EUP | ● .375 | .1875 | .0313 | .150 | |
| TNMG432EUP | ● .500 | .1875 | .0313 | .2031 | |
| TNMG321EUX | ● .375 | .125 | .0156 | .150 | |
| TNMG322EUX | ● .375 | .125 | .0313 | .150 | |
| TNMG331EUX | ● .375 | .1875 | .0156 | .150 | |
| TNMG332EUX | ● .375 | .1875 | .0313 | .150 | |
| TNMG333EUX | ● .375 | .1875 | .0469 | .150 | |
| TNMG432EUX | ● .500 | .1875 | .0313 | .2031 | |

| TNMM Triangle/Negative | | | | | |
|-------------------------|--------------------------|-----------|-------------|----------------------|--|
| Sumitomo Catalog Number | AC8025P Inscribed Circle | Thickness | Nose Radius | Insert Hole Diameter | |
| TNMM432EHG | ● .500 | .1875 | .0313 | .2031 | |
| TNMM433EHG | ● .500 | .1875 | .0469 | .2031 | |
| TNMM434EHG | ● .500 | .1875 | .0625 | .2031 | |

| TRM 55° Triangle/Negative | | | | | |
|---------------------------|--------------------------|-----------|-------------|----------------------|--|
| Sumitomo Catalog Number | AC8025P Inscribed Circle | Thickness | Nose Radius | Insert Hole Diameter | |
| TRM551704-GU | ● .394 | .197 | .0156 | .084 | |
| TRM551708-GU | ● .394 | .197 | .0313 | .084 | |
| TRM551712-GU | ● .394 | .197 | .0469 | .084 | |
| TRM551704-LU | ● .394 | .197 | .0156 | .084 | |
| TRM551708-LU | ● .394 | .197 | .0313 | .084 | |
| TRM551712-LU | ● .394 | .197 | .0469 | .084 | |
| TRM551712-SU | ● .394 | .197 | .0469 | .084 | |

| VNMG 35° Diamond/Negative | | | | | |
|---------------------------|--------------------------|-----------|-------------|----------------------|--|
| Sumitomo Catalog Number | AC8025P Inscribed Circle | Thickness | Nose Radius | Insert Hole Diameter | |
| VNMG331EFL | ● .375 | .1875 | .0156 | .150 | |
| VNMG332EFL | ● .375 | .1875 | .0313 | .150 | |
| VNMG331EGE | ● .375 | .1875 | .0156 | .150 | |
| VNMG332EGE | ● .375 | .1875 | .0313 | .150 | |
| VNMG333EGE | ● .375 | .1875 | .0469 | .150 | |
| VNMG331EGU | ● .375 | .1875 | .0156 | .150 | |
| VNMG332EGU | ● .375 | .1875 | .0313 | .150 | |
| VNMG333EGU | ● .375 | .1875 | .0469 | .150 | |
| VNMG331ELU | ● .375 | .1875 | .0156 | .150 | |
| VNMG332ELU | ● .375 | .1875 | .0313 | .150 | |
| VNMG331ENG | ● .375 | .1875 | .0156 | .150 | |
| VNMG332ENG | ● .375 | .1875 | .0313 | .150 | |
| VNMG332ENZ | ● .375 | .1875 | .0313 | .150 | |
| VNMG333ENZ | ● .375 | .1875 | .0469 | .150 | |
| VNMG432ENZ | ● .500 | .1875 | .0313 | .2031 | |
| VNMG433ENZ | ● .500 | .1875 | .0469 | .2031 | |
| VNMG331ESE | ● .375 | .1875 | .0156 | .150 | |
| VNMG332ESE | ● .375 | .1875 | .0313 | .150 | |
| VNMG331ESU | ● .375 | .1875 | .0156 | .150 | |
| VNMG332ESU | ● .375 | .1875 | .0313 | .150 | |
| VNMG331ESX | ● .375 | .1875 | .0156 | .150 | |
| VNMG332ESX | ● .375 | .1875 | .0313 | .150 | |
| VNMG331EUP | ● .375 | .1875 | .0156 | .150 | |
| VNMG332EUP | ● .375 | .1875 | .0313 | .150 | |
| VNMG331EUX | ● .375 | .1875 | .0156 | .150 | |
| VNMG332EUX | ● .375 | .1875 | .0313 | .150 | |
| VNMG333EUX | ● .375 | .1875 | .0469 | .150 | |

| WNMG Trigon/Negative | | | | | |
|-------------------------|--------------------------|-----------|-------------|----------------------|--|
| Sumitomo Catalog Number | AC8025P Inscribed Circle | Thickness | Nose Radius | Insert Hole Diameter | |
| WNMG332EEG | ● .375 | .1875 | .0313 | .150 | |
| WNMG432EEG | ● .500 | .1875 | .0313 | .2031 | |
| WNMG432EEM | ● .500 | .1875 | .0313 | .2031 | |
| WNMG431EFL | ● .500 | .1875 | .0156 | .2031 | |
| WNMG432EFL | ● .500 | .1875 | .0313 | .2031 | |
| WNMG332EGE | ● .375 | .1875 | .0313 | .150 | |
| WNMG432EGE | ● .500 | .1875 | .0313 | .2031 | |
| WNMG433EGE | ● .500 | .1875 | .0469 | .2031 | |
| WNMG434EGE | ● .500 | .1875 | .0625 | .2031 | |
| WNMG332EGU | ● .375 | .1875 | .0313 | .150 | |
| WNMG431EGU | ● .500 | .1875 | .0156 | .2031 | |
| WNMG432EGU | ● .500 | .1875 | .0313 | .2031 | |
| WNMG433EGU | ● .500 | .1875 | .0469 | .2031 | |
| WNMG332EGUW | ● .500 | .1875 | .0313 | .150 | |
| WNMG432EGUW | ● .500 | .1875 | .0313 | .2031 | |
| WNMG433EGUW | ● .500 | .1875 | .0469 | .2031 | |
| WNMG331ELU | ● .375 | .1875 | .0156 | .150 | |
| WNMG332ELU | ● .375 | .1875 | .0313 | .150 | |
| WNMG431ELU | ● .500 | .1875 | .0156 | .2031 | |
| WNMG432ELU | ● .500 | .1875 | .0313 | .2031 | |
| WNMG433ELU | ● .500 | .1875 | .0469 | .2031 | |
| WNMG331ELUW | ● .500 | .1875 | .0156 | .150 | |
| WNMG332ELUW | ● .500 | .1875 | .0313 | .150 | |
| WNMG431ELUW | ● .500 | .1875 | .0156 | .2031 | |
| WNMG432ELUW | ● .500 | .1875 | .0313 | .2031 | |
| WNMG332EME | ● .375 | .1875 | .0313 | .150 | |
| WNMG432EME | ● .500 | .1875 | .0313 | .2031 | |
| WNMG433EME | ● .500 | .1875 | .0469 | .2031 | |
| WNMG434EME | ● .500 | .1875 | .0625 | .2031 | |
| WNMG332EMU | ● .375 | .1875 | .0313 | .150 | |
| WNMG432EMU | ● .500 | .1875 | .0313 | .2031 | |
| WNMG433EMU | ● .500 | .1875 | .0469 | .2031 | |
| WNMG543EMU | ● .625 | .250 | .0469 | .250 | |
| WNMG432EMX | ● .500 | .1875 | .0313 | .2031 | |
| WNMG433EMX | ● .500 | .1875 | .0469 | .2031 | |
| WNMG431ENG | ● .500 | .1875 | .0156 | .2031 | |
| WNMG432ENG | ● .500 | .1875 | .0313 | .2031 | |
| WNMG433ENG | ● .500 | .1875 | .0469 | .2031 | |
| WNMG543ENG | ● .625 | .250 | .0469 | .250 | |
| WNMG431ENZ | ● .500 | .1875 | .0156 | .2031 | |
| WNMG432ENZ | ● .500 | .1875 | .0313 | .2031 | |
| WNMG331ESE | ● .375 | .1875 | .0156 | .150 | |
| WNMG332ESE | ● .375 | .1875 | .0313 | .150 | |
| WNMG431ESE | ● .500 | .1875 | .0156 | .203 | |

AC8025P Availability - Positive Inserts

CCMT 80° Diamond/ 7° Relief Angle

| Sumitomo Catalog Number | AC8025P | Inscribed Circle | Thickness | Nose Radius | Insert Hole Diameter |
|-------------------------|---------|------------------|-----------|-------------|----------------------|
| CCMT21.51EFM | ● | .250 | .094 | .0156 | .110 |
| CCMT21.50.5ELB | ● | .250 | .094 | .0078 | .110 |
| CCMT21.51ELB | ● | .250 | .094 | .0156 | .110 |
| CCMT21.52ELB | ● | .250 | .094 | .0313 | .110 |
| CCMT32.50.5ELB | ● | .375 | .156 | .0078 | .1732 |
| CCMT32.51ELB | ● | .375 | .156 | .0156 | .1732 |
| CCMT32.52ELB | ● | .375 | .156 | .0313 | .1732 |
| CCMT21.50.5ELU | ● | .250 | .094 | .0078 | .110 |
| CCMT21.51ELU | ● | .250 | .094 | .0156 | .110 |
| CCMT32.51ELU | ● | .375 | .156 | .0156 | .1732 |
| CCMT32.52ELU | ● | .375 | .156 | .0313 | .1732 |
| CCMT32.51ELUW | ● | .375 | .156 | .0156 | .1732 |
| CCMT32.52ELUW | ● | .375 | .156 | .0313 | .1732 |
| CCMT32.51EMU | ● | .375 | .156 | .0156 | .1732 |
| CCMT32.52EMU | ● | .375 | .156 | .0313 | .1732 |
| CCMT21.51ENK | ● | .250 | .094 | .0156 | .110 |
| CCMT21.52ENK | ● | .250 | .094 | .0313 | .110 |
| CCMT32.51ENK | ● | .375 | .125 | .0156 | .1732 |
| CCMT32.52ENK | ● | .375 | .125 | .0313 | .1732 |
| CCMT431ENK | ● | .500 | .1875 | .0156 | .2165 |
| CCMT432ENK | ● | .500 | .1875 | .0313 | .2165 |
| CCMT21.50.5ESU | ● | .250 | .094 | .0078 | .110 |
| CCMT21.51ESU | ● | .250 | .094 | .0156 | .110 |
| CCMT21.52ESU | ● | .250 | .094 | .0313 | .110 |
| CCMT32.50.5ESU | ● | .375 | .156 | .0078 | .1732 |
| CCMT32.51ESU | ● | .375 | .156 | .0156 | .1732 |
| CCMT32.52ESU | ● | .375 | .156 | .0313 | .1732 |
| CCMT431ESU | ● | .500 | .1875 | .0156 | .2165 |
| CCMT432ESU | ● | .500 | .1875 | .0313 | .2165 |

CPMT 80° Diamond/11° Relief Angle

| Sumitomo Catalog Number | AC8025P | Inscribed Circle | Thickness | Nose Radius | Insert Hole Diameter |
|-------------------------|---------|------------------|-----------|-------------|----------------------|
| CPMT321ELU | ● | .375 | .125 | .0156 | .1732 |
| CPMT2.51.51EMU | ● | .3125 | .094 | .0156 | .134 |
| CPMT2.51.52EMU | ● | .3125 | .094 | .0313 | .134 |
| CPMT2.51.51ESU | ● | .3125 | .094 | .0156 | .134 |
| CPMT2.51.52ESU | ● | .3125 | .094 | .0313 | .134 |
| CPMT21.51ESU | ● | .250 | .094 | .0156 | .110 |
| CPMT21.52ESU | ● | .250 | .094 | .0313 | .110 |
| CPMT32.51ESU | ● | .375 | .156 | .0156 | .1732 |
| CPMT32.52ESU | ● | .375 | .156 | .0313 | .1732 |
| CPMT321ESU | ● | .375 | .125 | .0156 | .1732 |
| CPMT322ESU | ● | .375 | .125 | .0313 | .1732 |

● = USA Stocked item

DCMT 55° Diamond/ 7° Relief Angle

| Sumitomo Catalog Number | AC8025P | Inscribed Circle | Thickness | Nose Radius | Insert Hole Diameter |
|-------------------------|---------|------------------|-----------|-------------|----------------------|
| DCMT21.50.5ELB | ● | .250 | .094 | .0078 | .110 |
| DCMT21.51ELB | ● | .250 | .094 | .0156 | .110 |
| DCMT21.52ELB | ● | .250 | .094 | .0313 | .110 |
| DCMT32.50.5ELB | ● | .375 | .156 | .0078 | .1732 |
| DCMT32.51ELB | ● | .375 | .156 | .0156 | .1732 |
| DCMT32.52ELB | ● | .375 | .156 | .0313 | .1732 |
| DCMT21.51ELU | ● | .250 | .094 | .0156 | .110 |
| DCMT32.52ELU | ● | .375 | .156 | .0313 | .1732 |
| DCMT32.51EMU | ● | .375 | .156 | .0156 | .1732 |
| DCMT32.52EMU | ● | .375 | .156 | .0313 | .1732 |
| DCMT21.51ENK | ● | .250 | .094 | .0156 | .110 |
| DCMT32.51ENK | ● | .375 | .156 | .0156 | .1732 |
| DCMT32.52ENK | ● | .375 | .156 | .0313 | .1732 |
| DCMT21.50.5ESU | ● | .250 | .094 | .0078 | .110 |
| DCMT21.51ESU | ● | .250 | .094 | .0156 | .110 |
| DCMT21.52ESU | ● | .250 | .094 | .0313 | .110 |
| DCMT32.50.5ESU | ● | .375 | .156 | .0078 | .1732 |
| DCMT32.51ESU | ● | .375 | .156 | .0156 | .1732 |
| DCMT32.52ESU | ● | .375 | .156 | .0313 | .1732 |

DPMT 55° Diamond/ 11° Relief Angle

| Sumitomo Catalog Number | AC8025P | Inscribed Circle | Thickness | Nose Radius | Insert Hole Diameter |
|-------------------------|---------|------------------|-----------|-------------|----------------------|
| DPMT21.51ESU | ● | .250 | .094 | .0156 | .110 |
| DPMT32.51ESU | ● | .375 | .156 | .0156 | .1732 |
| DPMT32.52ESU | ● | .375 | .156 | .0313 | .1732 |

SCMT 90° Square/ 7° Relief Angle

| Sumitomo Catalog Number | AC8025P | Inscribed Circle | Thickness | Nose Radius | Insert Hole Diameter |
|-------------------------|---------|------------------|-----------|-------------|----------------------|
| SCMT32.51ELB | ● | .375 | .156 | .0156 | .1732 |
| SCMT32.52ELB | ● | .375 | .156 | .0313 | .1732 |
| SCMT32.51ELU | ● | .375 | .156 | .0156 | .1732 |
| SCMT32.52ELU | ● | .375 | .156 | .0313 | .1732 |
| SCMT32.52EMU | ● | .375 | .156 | .0313 | .1732 |
| SCMT32.52ENK | ● | .375 | .156 | .0313 | .1732 |
| SCMT431ENK | ● | .500 | .1875 | .0156 | .2165 |
| SCMT432ENK | ● | .500 | .1875 | .0313 | .2165 |
| SCMT32.51ESU | ● | .375 | .156 | .0156 | .1732 |
| SCMT32.52ESU | ● | .375 | .156 | .0313 | .1732 |
| SCMT431ESU | ● | .500 | .1875 | .0156 | .2165 |
| SCMT432ESU | ● | .500 | .1875 | .0313 | .2165 |

SPG 90° Square/ 11° Relief Angle

| Sumitomo Catalog Number | AC8025P | Inscribed Circle | Thickness | Nose Radius | Insert Hole Diameter |
|-------------------------|---------|------------------|-----------|-------------|----------------------|
| SPG422 | ● | .500 | .125 | .0313 | - |
| SPG423 | ● | .500 | .125 | .0469 | - |
| SPG432 | ● | .500 | .1875 | .0313 | - |
| SPG433 | ● | .500 | .1875 | .0469 | - |
| SPG632 | ● | .750 | .1875 | .0313 | - |
| SPG633 | ● | .750 | .1875 | .0469 | - |
| SPG634 | ● | .750 | .1875 | .0625 | - |

SPMN 90° Square/ 11° Relief Angle

| Sumitomo Catalog Number | AC8025P | Inscribed Circle | Thickness | Nose Radius | Insert Hole Diameter |
|-------------------------|---------|------------------|-----------|-------------|----------------------|
| SPMN322 | ● | .375 | .125 | .0313 | - |
| SPMN421 | ● | .500 | .125 | .0156 | - |
| SPMN422 | ● | .500 | .125 | .0313 | - |
| SPMN634 | ● | .750 | .1875 | .0625 | - |

TBGT Triangle/ 5° Relief Angle

| Sumitomo Catalog Number | AC8025P | Inscribed Circle | Thickness | Nose Radius | Insert Hole Diameter |
|-------------------------|---------|------------------|-----------|-------------|----------------------|
| TBGT520.5L | ● | .156 | .0625 | .0078 | .090 |
| TBGT521L | ● | .156 | .0625 | .0156 | .090 |
| TBGT520.5LFX | ● | .156 | .0625 | .0078 | .090 |
| TBGT521LFX | ● | .156 | .0625 | .0156 | .090 |

TCMT Triangle/ 7° Relief Angle

| Sumitomo Catalog Number | AC8025P | Inscribed Circle | Thickness | Nose Radius | Insert Hole Diameter |
|-------------------------|---------|------------------|-----------|-------------|----------------------|
| TCMT21.51ELB | ● | .250 | .094 | .0156 | .110 |
| TCMT21.52ELB | ● | .250 | .094 | .0313 | .110 |
| TCMT21.51ENK | ● | .250 | .094 | .0156 | .110 |
| TCMT21.52ENK | ● | .250 | .094 | .0313 | .110 |
| TCMT32.51ENK | ● | .375 | .156 | .0156 | .1693 |
| TCMT32.52ENK | ● | .375 | .156 | .0313 | .1693 |
| TCMT32.53ENK | ● | .375 | .156 | .0469 | .1693 |
| TCMT21.51ESU | ● | .250 | .094 | .0156 | .110 |
| TCMT21.52ESU | ● | .250 | .094 | .0313 | .110 |
| TCMT32.51ESU | ● | .375 | .156 | .0156 | .1693 |
| TCMT32.52ESU | ● | .375 | .156 | .0313 | .1693 |

TPG Triangle/ 11° Relief Angle

| Sumitomo Catalog Number | AC8025P | Inscribed Circle | Thickness | Nose Radius | Insert Hole Diameter |
|-------------------------|---------|------------------|-----------|-------------|----------------------|
| TPG221 | ● | .250 | .125 | .0156 | - |
| TPG222 | ● | .250 | .125 | .0313 | - |
| TPG321 | ● | .375 | .125 | .0156 | - |
| TPG322 | ● | .375 | .125 | .0313 | - |
| TPG323 | ● | .375 | .125 | .0469 | - |
| TPG324 | ● | .375 | .125 | .0625 | - |
| TPG332 | ● | .375 | .1875 | .0313 | - |
| TPG431 | ● | .500 | .1875 | .0156 | - |
| TPG432 | ● | .500 | .1875 | .0313 | - |
| TPG433 | ● | .500 | .1875 | .0469 | - |
| TPG434 | ● | .500 | .1875 | .0625 | - |
| TPG436 | ● | .500 | .1875 | .0938 | - |

TPM Triangle/ 11° Relief Angle

| Sumitomo Catalog Number | AC8025P | Inscribed Circle | Thickness | Nose Radius | Insert Hole Diameter |
|-------------------------|---------|------------------|-----------|-------------|----------------------|
| TPMN321 | ● | .375 | .125 | .0156 | - |
| TPMN322 | ● | .375 | .125 | .0313 | - |
| TPMN432 | ● | .500 | .1875 | .0313 | - |
| TPMN433 | ● | .500 | .1875 | .0469 | - |

See next page for positive inserts availability continued

AC8025P Availability - Positive Inserts Cont'd

| TPMR Triangle/ 11° Relief Angle | | | | | |
|---------------------------------|---------|------------------|-----------|-------------|----------------------|
| Sumitomo Catalog Number | AC8025P | Inscribed Circle | Thickness | Nose Radius | Insert Hole Diameter |
| TPMR221ENF | ● | .250 | .125 | .0156 | |
| TPMR222ENF | ● | .250 | .125 | .0313 | |
| TPMR321ENF | ● | .375 | .125 | .0156 | |
| TPMR322ENF | ● | .375 | .125 | .0313 | |
| TPMR323ENF | ● | .375 | .125 | .0469 | |
| TPMR432ENF | ● | .500 | .1875 | .0313 | |
| TPMR433ENF | ● | .500 | .1875 | .0469 | |
| TPMR322EUJ | ● | .375 | .125 | .0313 | |

| TPMT Triangle/ 11° Relief Angle | | | | | |
|---------------------------------|---------|------------------|-----------|-------------|----------------------|
| Sumitomo Catalog Number | AC8025P | Inscribed Circle | Thickness | Nose Radius | Insert Hole Diameter |
| TPMT630.5ELB | ● | .1875 | .094 | .0078 | .090 |
| TPMT631ELB | ● | .1875 | .094 | .0156 | .090 |
| TPMT1.81.50.5ELB | ● | .219 | .094 | .0078 | .098 |
| TPMT1.81.51ELB | ● | .219 | .094 | .0156 | .098 |
| TPMT220.5ELB | ● | .250 | .125 | .0078 | .130 |
| TPMT221ELB | ● | .250 | .125 | .0156 | .130 |
| TPMT222ELB | ● | .250 | .125 | .0313 | .130 |
| TPMT331ELB | ● | .375 | .1875 | .0156 | .1693 |
| TPMT332ELB | ● | .375 | .1875 | .0313 | .1693 |

| TPMT Triangle/ 11° Relief Angle Cont'd | | | | | |
|--|---------|------------------|-----------|-------------|----------------------|
| Sumitomo Catalog Number | AC8025P | Inscribed Circle | Thickness | Nose Radius | Insert Hole Diameter |
| TPMT221ELU | ● | .250 | .125 | .0156 | .130 |
| TPMT222ELU | ● | .250 | .125 | .0313 | .130 |
| TPMT222EMU | ● | .250 | .125 | .0313 | .130 |
| TPMT331EMU | ● | .375 | .1875 | .0156 | .1693 |
| TPMT332EMU | ● | .375 | .1875 | .0313 | .1693 |
| TPMT221ENF | ● | .250 | .125 | .0156 | .130 |
| TPMT222ENF | ● | .250 | .125 | .0313 | .130 |
| TPMT331ENF | ● | .375 | .1875 | .0156 | .1693 |
| TPMT332ENF | ● | .375 | .1875 | .0313 | .1693 |
| TPMT1.81.50.5ESU | ● | .219 | .094 | .0078 | .098 |
| TPMT1.81.51ESU | ● | .219 | .094 | .0156 | .098 |
| TPMT21.50.5ESU | ● | .250 | .094 | .0078 | .110 |
| TPMT21.51ESU | ● | .250 | .094 | .0156 | .110 |
| TPMT21.52ESU | ● | .250 | .094 | .0313 | .110 |
| TPMT220.5ESU | ● | .250 | .125 | .0078 | .130 |
| TPMT221ESU | ● | .250 | .125 | .0156 | .130 |
| TPMT222ESU | ● | .250 | .125 | .0313 | .130 |
| TPMT32.51ESU | ● | .375 | .156 | .0156 | .1693 |
| TPMT32.52ESU | ● | .375 | .156 | .0313 | .1693 |
| TPMT331ESU | ● | .375 | .1875 | .0156 | .1693 |
| TPMT332ESU | ● | .375 | .1875 | .0313 | .1693 |

| VBMT 35° Diamond/ 5° Relief Angle | | | | | |
|-----------------------------------|---------|------------------|-----------|-------------|----------------------|
| Sumitomo Catalog Number | AC8025P | Inscribed Circle | Thickness | Nose Radius | Insert Hole Diameter |
| VBMT331ELB | ● | .375 | .1875 | .0156 | .1732 |
| VBMT332ELB | ● | .375 | .1875 | .0313 | .1732 |
| VBMT331ELU | ● | .375 | .1875 | .0156 | .1732 |
| VBMT332ELU | ● | .375 | .1875 | .0313 | .1732 |
| VBMT332ENK | ● | .375 | .1875 | .0313 | .1732 |
| VBMT221ESU | ● | .250 | .125 | .0156 | .134 |
| VBMT222ESU | ● | .250 | .125 | .0313 | .134 |
| VBMT331ESU | ● | .375 | .1875 | .0156 | .1732 |
| VBMT332ESU | ● | .375 | .1875 | .0313 | .1732 |

| VCMT 35° Diamond/ 7° Relief Angle | | | | | |
|-----------------------------------|---------|------------------|-----------|-------------|----------------------|
| Sumitomo Catalog Number | AC8025P | Inscribed Circle | Thickness | Nose Radius | Insert Hole Diameter |
| VCMT331ELB | ● | .375 | .1875 | .0156 | .1732 |
| VCMT332ELB | ● | .375 | .1875 | .0313 | .1732 |
| VCMT331ELU | ● | .375 | .1875 | .0156 | .1732 |
| VCMT332ELU | ● | .375 | .1875 | .0313 | .1732 |
| VCMT331ENK | ● | .375 | .1875 | .0156 | .1732 |
| VCMT332ENK | ● | .375 | .1875 | .0313 | .1732 |
| VCMT331ESU | ● | .375 | .1875 | .0156 | .1732 |
| VCMT332ESU | ● | .375 | .1875 | .0313 | .1732 |

| WPMT 80° Trigon/ 11° Relief Angle | | | | | |
|-----------------------------------|---------|------------------|-----------|-------------|----------------------|
| Sumitomo Catalog Number | AC8025P | Inscribed Circle | Thickness | Nose Radius | Insert Hole Diameter |
| WPMT110204N-LB | ● | .250 | .094 | .0156 | .110 |
| WPMT160308N-LB | ● | .375 | .125 | .0313 | .1732 |

Headquarters

1001 Business Center Drive
Mount Prospect, IL 60056-2181
P.O. Box 545,
Mt. Prospect, IL 60056-0545
Phone: (800) 950-5202
Phone: (847) 635-0044
Fax: (847) 635-7866
<http://www.sumicarbide.com>

Torrance Branch

21241 South Western Avenue
Suite 120
Torrance, CA 90501
Phone: (800) 950-5202
Fax: (310) 782-0211

Sumitomo Carbide Canada, Inc.

150 Research Lane
Unit #210
Guelph, Ontario N1G 4T2
Canada
Phone: (519) 265-6050
Phone: (844) 211-6050



Sumitomo Electric Carbide, Inc.



Sumitomo Electric Tool Engineering Center

5637 S. Westridge Drive
New Berlin, WI 53151
Phone: (800) 950-5202

Indiana Branch

595 S. Emerson Avenue
Suite 100
Greenwood, IN 46143
Phone: (800) 950-5202

Detroit Branch

14496 Sheldon Road #230
Plymouth, MI 48170
Phone: (800) 239-5177
Phone: (734) 451-0200
Fax: (734) 451-5338

Huntsville Branch

6700 Odyssey Drive
Suite 211
Huntsville, AL 35806
Phone: (256) 971-1203
Fax: (256) 971-1205