

MODULAR TOOLING

Pages 393-399



MODULAR TOOLING

PAGES

Modular Tools Features & Benefits	394-395
WEX Type	396
RSX Type	397
MSX Type	398
TSX Type	399

Indexable
Milling

Shoulder
Milling

Face
Milling

High
Feed
Milling

Multi-
purpose

Modular
Tooling

UFO &
SumiMill

Discontin-
ued



Features & Benefits

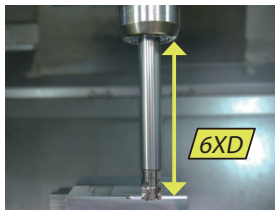
Exchangeable head endmills are available in 3 types!

- 1) **WEX Type** Shoulder Endmill
- 2) **RSX Type** Multi-purpose Radius Endmill
- 3) **MSX Type** Ultra-High Feed Endmill
- 4) **TSX Type** Tangential Shoulder Endmill

Characteristics

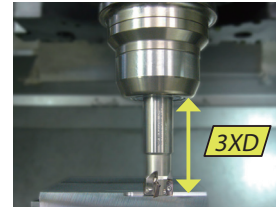
Carbide arbors can be applied up to 6 times diameter to length ratio.

Modular Type + Carbide Arbor



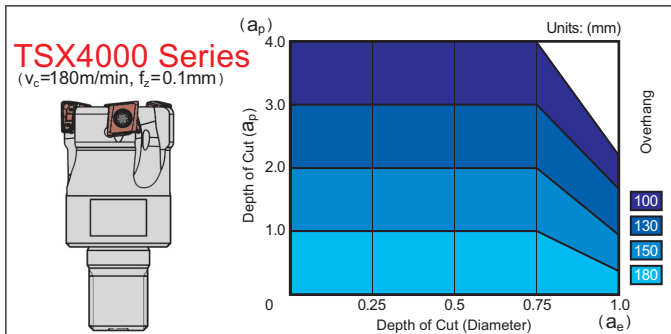
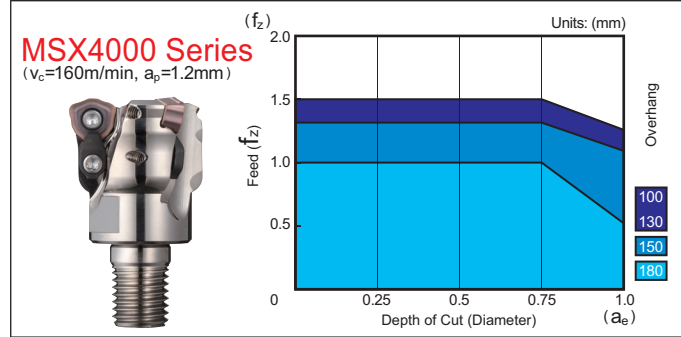
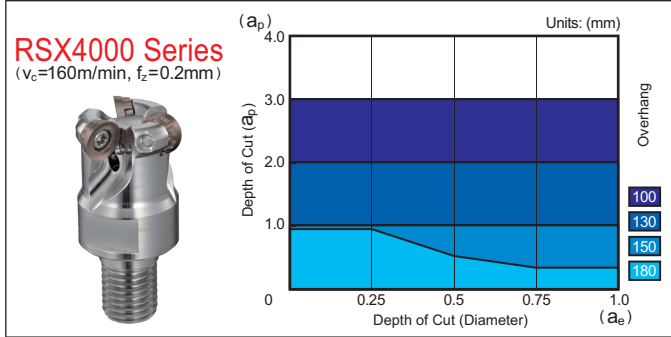
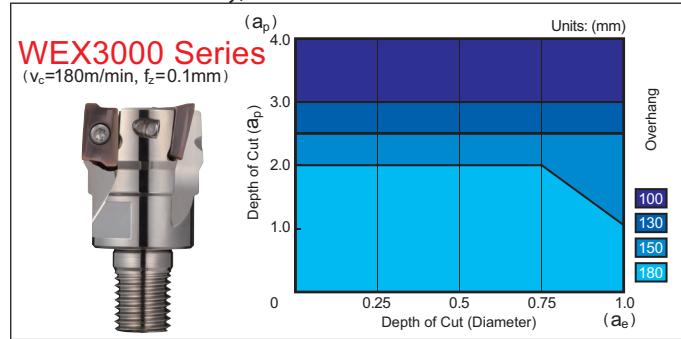
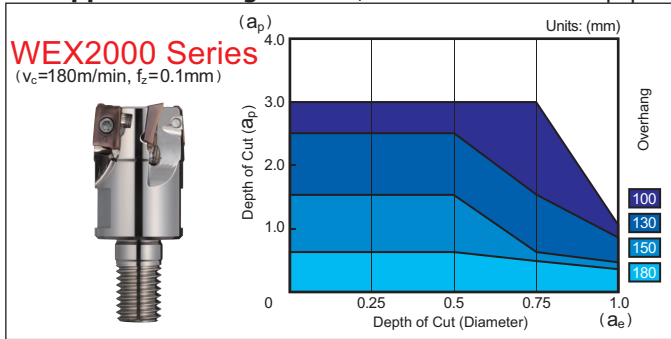
Work Material: 1049
 Tool: WEX2025M12Z4 ($\phi 25 \times 4$ flutes)
 Cutting Conditions: $v_c=328$ SFM $f_z=0.004$ IPT
 $a_e=315$ mm x 3 D.O.C.=.079" Equipment = M/C BT50

Standard Type (Integrated Arbor)



Application Range

(Work Material: 1049 Equipment: Vertical M/C BT50 Dry)



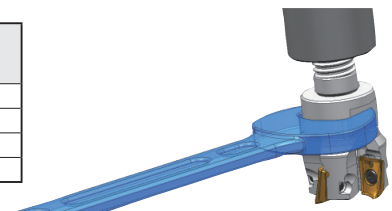
Recommended Tightening Torque (N·m)

*Notes about tightening the head.

When attaching the head to an arbor, follow the standard tightening torque in the table below.

Check the mounting screw size for the head and arbor beforehand.

Screw Size	Torque (N·m)
M8	23
M10	46
M12	80
M16	90



Note: These tables indicate reference machining conditions. Actual machining parameters should be adjusted based on machine rigidity and work clamp rigidity.

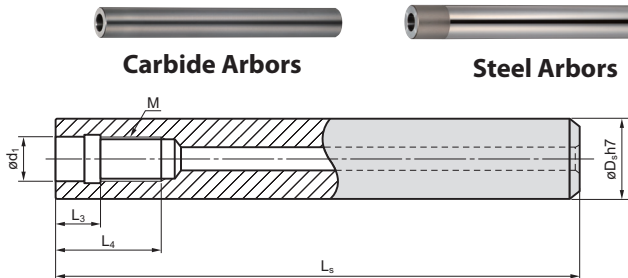


Exchangeable Head Endmills

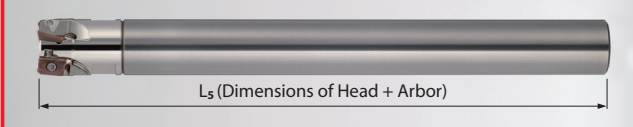
MODULAR TOOLS

Suitable for milling with **long overhangs** when combined with carbide or steel arbors

Modular Tools Special Arbors (Carbide Arbors/Steel Arbors)



Set Dimensions (*)



★ Worldwide Warehouse Item

Carbide Arbors

Catalog Number	Stock	Dimension (mm)						
		M	ød ₁	øD ₅	L ₅	L ₃	L ₄	L ₅ *
MA15M08L120C	★	M8	8.5	15	120	10	18	145
MA15M08L160C	★	M8	8.5	15	160	10	18	185
MA16M08L120C	★	M8	8.5	16	120	10	18	145
MA16M08L160C	★	M8	8.5	16	160	10	18	185
MA18M10L150C	★	M10	10.5	18	150	10	20	180
MA18M10L200C	★	M10	10.5	18	200	10	20	230
MA20M10L150C	★	M10	10.5	20	150	10	20	180
MA20M10L200C	★	M10	10.5	20	200	10	20	230
MA23M12L200C	★	M12	12.5	23	200	10	22	235
MA23M12L250C	★	M12	12.5	23	250	10	22	285
MA25M12L200C	★	M12	12.5	25	200	10	22	235
MA25M12L250C	★	M12	12.5	25	250	10	22	285
MA28M16L200C	★	M16	17.0	28	200	10	24	240
MA28M16L300C	★	M16	17.0	28	300	10	24	340
MA32M16L200C	★	M16	17.0	32	200	10	24	240
MA32M16L300C	★	M16	17.0	32	300	10	24	340

Steel Arbors

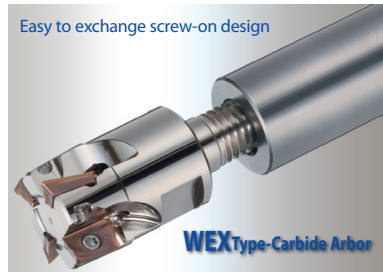
Catalog Number	Stock	Dimension (mm)						
		M	ød ₁	øD ₅	L ₅	L ₃	L ₄	L ₅
MA16M08L120S	★	M8	8.5	16	120	10	18	145
MA18M10L150S								
MA20M10L150S	★	M10	10.5	20	150	10	20	180
MA25M12L200S	★	M12	12.5	25	200	10	22	235
MA28M16L200S								
MA32M16L200S	★	M16	17.0	32	200	10	24	240

★ Worldwide Warehouse Item

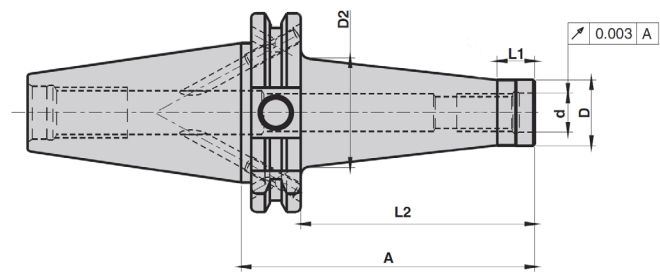
Arbor Identification

MA 15 M08 L120 C

(1) Cutter Series (2) Shank Diameter (3) Mounting Screw (4) Arbor Length (5) C: Carbide S: Steel



Modular Tools Adapters



Modular Adapters - SK40

Catalog Number	Stock	Dimension (mm)						
		M	d	D ₁	D ₂	A	L ₁	L ₂
SMA-M8-69-SK40	★	M8	8.5	13.8	23	69	12	49.9
SMA-M8-94-SK40	★	M8	8.5	13.8	25	94	12	74.9
SMA-M8-119-SK40	★	M8	8.5	13.8	30	119	12	99.9
SMA-M10-69-SK40	★	M8	8.5	18.0	25	69	12	49.9
SMA-M10-94-SK40	★	M10	10.5	18.0	30	94	12	74.9
SMA-M10-119-SK40	★	M10	10.5	18.0	35	119	12	99.9
SMA-M10-169-SK40	★	M10	10.5	18.0	45	169	12	149.9
SMA-M12-69-SK40	★	M10	12.5	21.0	30	69	12	49.9
SMA-M12-94-SK40	★	M12	12.5	21.0	35	94	12	74.9
SMA-M12-119-SK40	★	M12	12.5	21.0	38	119	12	99.9
SMA-M12-169-SK40	★	M12	12.5	21.0	48	169	12	149.9
SMA-M16-69-SK40	★	M12	17.0	29.0	34	69	12	49.9
SMA-M16-94-SK40	★	M16	17.0	29.0	35	94	12	74.9
SMA-M16-119-SK40	★	M16	17.0	29.0	40	119	12	99.9
SMA-M16-169-SK40	★	M16	17.0	29.0	48	169	12	149.9

Note: The above holders require an M16 thread retention knob

Modular Adapters - SK50

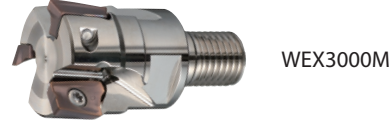
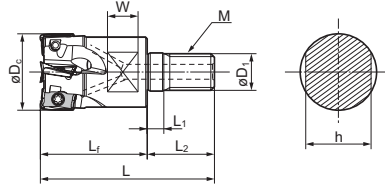
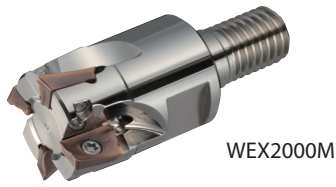
Catalog Number	Stock	Dimension (mm)						
		M	d	D ₁	D ₂	A	L ₁	L ₂
SMA-M8-69-SK50	★	M8	8.5	13.8	23	69	12	49.9
SMA-M8-119-SK50	★	M8	8.5	13.8	30	119	12	74.9
SMA-M8-169-SK50	★	M8	8.5	13.8	45	169	12	99.9
SMA-M10-69-SK50	★	M10	10.5	18.0	25	69	12	49.9
SMA-M10-119-SK50	★	M10	10.5	18.0	35	119	12	99.9
SMA-M10-169-SK50	★	M10	10.5	18.0	45	169	12	149.9
SMA-M12-69-SK50	★	M12	12.5	21.0	30	69	12	49.9
SMA-M12-119-SK50	★	M12	12.5	21.0	38	119	12	99.9
SMA-M12-169-SK50	★	M12	12.5	21.0	52	169	12	149.9
SMA-M16-69-SK50	★	M16	17.0	29.0	34	69	12	49.9
SMA-M16-119-SK50	★	M16	17.0	29.0	40	119	12	99.9
SMA-M16-169-SK50	★	M16	17.0	29.0	48	169	12	149.9

Note: The above holders require an M24 thread retention knob



MODULAR- INCH & METRIC WEX Series

Rake Angle	Radial	10° to 18°	10mm	0°	<table border="1"> <tr> <td>P</td><td>M</td><td>K</td><td>N</td><td>S</td><td>H</td> </tr> <tr> <td>Steel</td><td>Cast Iron</td><td>Cast Iron</td><td>Aluminum</td><td>Aluminum</td><td>Cast Alloy</td> </tr> </table>	P	M	K	N	S	H	Steel	Cast Iron	Cast Iron	Aluminum	Aluminum	Cast Alloy
P	M	K				N	S	H									
Steel	Cast Iron	Cast Iron	Aluminum	Aluminum	Cast Alloy												
	Axial	14° to 25°															
Rake Angle	Radial	8° to 15°	14mm	0°	<table border="1"> <tr> <td>P</td><td>M</td><td>K</td><td>N</td><td>S</td><td>H</td> </tr> <tr> <td>Steel</td><td>Cast Iron</td><td>Cast Iron</td><td>Aluminum</td><td>Aluminum</td><td>Cast Alloy</td> </tr> </table>	P	M	K	N	S	H	Steel	Cast Iron	Cast Iron	Aluminum	Aluminum	Cast Alloy
P	M	K				N	S	H									
Steel	Cast Iron	Cast Iron	Aluminum	Aluminum	Cast Alloy												
	Axial	16° to 24°															



★ Worldwide Warehouse Item Inserts are not included

Modular Head - INCH										Insert: AXMT12	
Catalog Number	Stock	Dimensions (in.)								No. of Teeth	
		øD _c	øD ₁	M	L	L _f	L ₁	L ₂	W		h
WEX20750M10Z3	○	0.750	0.413	M10	1.929	1.181	0.197	0.748	0.315	0.591	3
WEX21000M12Z4	○	1.000	0.492	M12	2.205	1.378	0.197	0.827	0.394	0.748	4
WEX21250M16Z5	○	1.250	0.669	M16	2.480	1.575	0.197	0.906	0.394	0.945	5
WEX21500M16Z6	○	1.500	0.669	M16	2.480	1.575	0.197	0.906	0.394	0.945	6

Modular Head - INCH										Insert: AXMT17	
Catalog Number	Stock	Dimensions (in.)								No. of Teeth	
		øD _c	øD ₁	M	L	L _f	L ₁	L ₂	W		h
WEX31000M12Z2	○	1.000	0.492	M12	2.205	1.378	0.197	0.827	0.394	0.748	2
WEX31250M16Z3	○	1.250	0.669	M16	2.480	1.575	0.197	0.906	0.394	0.945	3
WEX31500M16Z4	○	1.500	0.669	M16	2.480	1.575	0.197	0.906	0.394	0.945	4

○ Available 1st Quarter 2017

Arbor



★ Worldwide Warehouse Item Inserts are not included

Insert	WEX2000 Inserts						Dimensions (Inches)				
	P	K	M	S	N	H1	L	W	T	R	Facet Width
	ACP100	ACP200	ACP300	ACK200	ACK300	ACM200					
AXMT123504PEERG	●	●	●	●	●		.472	.260	.138	.016	.061
AXMT123504PEERH	●	●	●	●	●		.472	.260	.138	.016	.061
AXMT123508PEERG	●	●	●	●	●		.472	.260	.138	.031	.061
AXMT123508PEERH	●	●	●	●	●		.472	.260	.138	.031	.061
AXMT123512PEERG	●	●	●	●	●		.472	.260	.138	.047	.061
AXMT123512PEERH	●	●	●	●	●		.472	.260	.138	.047	.061
AXMT123504PEERE						●	.472	.260	.138	.016	.061
AXMT123508PEERE						●	.472	.260	.138	.031	.061
AXMT123508PEEREH						●	.472	.260	.138	.031	.061
AXMT123512PEERE						●	.472	.260	.138	.047	.061
AXMT123516PEERE						●	.472	.260	.138	.063	.061
AXMT123524PEERE						●	.472	.260	.138	.094	.061
AXMT123532PEERE						●	.472	.260	.138	.126	.061
AXET123502PEFRS						●	.472	.260	.138	.008	.061
AXET123504PEFRS						●	.472	.260	.138	.016	.061
AXET123508PEFRS						●	.472	.260	.138	.031	.061

WEX 2016 M08 Z2

(1) Cutter Series (2) Insert Size (3) Diameter (4) Mounting Screw (5) No. of Flutes

Hardware (WEX2000M)			
Spanner	Screw	Recommended Tightening Torque (N-m)	Applicable Endmill
TRDR08IP	BFTX0305IP	2.0	WEX2016M, WEX2018M
	BFTX0306IP	2.0	WEX2020M ~ WEX2040M

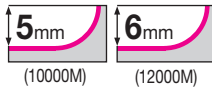
Anti-seizure cream SUMI-P included in the package

Insert	WEX3000 Inserts						Dimensions (Inches)				
	P	K	M	S	N	H1	L	W	T	R	Facet Width
	ACP100	ACP200	ACP300	ACK200	ACK300	ACM200					
AXMT170504PEERG	●	●	●	●	●		.689	.402	.219	.016	.118
AXMT170508PEERG	●	●	●	●	●		.689	.402	.219	.031	.118
AXMT170508PEERH	●	●	●	●	●		.689	.402	.219	.031	.118
AXMT170508PEERL	●	●	●	●	●		.689	.402	.219	.031	.118
AXMT170512PEERG	●	●	●	●	●		.689	.402	.219	.047	.118
AXMT170512PEERH	●	●	●	●	●		.689	.402	.219	.047	.118
AXMT170516PEERG	●	●	●	●	●		.689	.402	.219	.063	.118
AXMT170520PEERG	●	●	●	●	●		.689	.402	.219	.079	.118
AXMT170530PEERG	●	●	●	●	●		.689	.402	.219	.118	.118
AXMT170532PEERG	●	●	●	●	●		.689	.402	.219	.126	.118
AXMT170504PEERE						●	.689	.402	.219	.016	.118
AXMT170508PEERE						●	.689	.402	.219	.031	.118
AXMT170508PEEREH						●	.689	.402	.219	.031	.118
AXMT170512PEERE						●	.689	.402	.219	.047	.118
AXMT170516PEERE						●	.689	.402	.219	.063	.118
AXMT170520PEERE						●	.689	.402	.219	.079	.118
AXMT170524PEERE						●	.689	.402	.219	.094	.118
AXMT170530PEERE						●	.689	.402	.219	.118	.118
AXMT170531PEERE						●	.689	.402	.219	.122	.118
AXMT170548PEERE						●	.689	.402	.219	.189	.118
AXMT170563PEERE						●	.689	.402	.219	.248	.118
AXET170502PEFRS						●	.689	.402	.219	.008	.118
AXET170504PEFRS						●	.689	.402	.219	.016	.118
AXET170508PEFRS						●	.689	.402	.219	.031	.118

Hardware (WEX3000M)			
Spanner	Screw	Recommended Tightening Torque (N-m)	Applicable Endmill
TRDR15IP	BFTX0407IP	3.0	WEX3025M ~ WEX3030M
	BFTX0409IP	3.0	WEX3032M ~ WEX3040M



Rake Angle	Radial	-5°
	Axial	10°

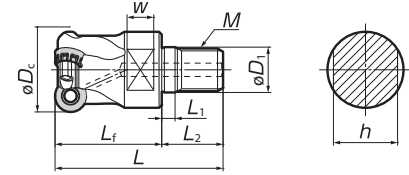


P	M	K	N	N	S	H
Steel	Stainless Steel	Cast Iron	Non-Ferrous Metal	Aluminum	Exotic Alloy	Hardened Steel

MODULAR- INCH & METRIC RSX Series

RSX

Milling for steel, stainless steel, cast iron, and non-ferrous alloys



Modular Head Course Pitch - INCH										Insert: RDET10	
Catalog Number	Stock	Dimensions (in)								No. of Teeth	
		ϕD_c	ϕD_1	M	L	L_f	L_1	L_2	W		h
RSXF31000M12Z3	○	1.000	0.492	M12	2.205	1.378	0.197	0.827	0.394	0.748	3
RSXF31250M16Z4	○	1.250	0.669	M16	2.480	1.575	0.197	0.906	0.394	0.945	4

Modular Head Fine Pitch - INCH										Insert: RDET12	
Catalog Number	Stock	Dimensions (in)								No. of Teeth	
		ϕD_c	ϕD_1	M	L	L_f	L_1	L_2	W		h
RSXF41250M16Z3	○	1.250	0.669	M16	2.480	1.575	0.197	0.906	0.394	0.945	3
RSXF41500M16Z4	○	1.500	0.669	M16	2.480	1.575	0.197	0.906	0.394	0.945	4

○ Available 1st Quarter 2017

Modular Head Course Pitch - METRIC										Insert: RDET10		
Catalog Number	Stock	Dimensions (mm)								No. of Teeth	Weight (kg)	
		ϕD_c	ϕD_1	M	L	L_f	L_1	L_2	W			h
RSX10025M12Z2	★	25	12.5	M12	56	35	5	21	10	19	2	0.1
RSX10032M16Z3	★	32	17.0	M16	63	40	5	23	10	24	3	0.2
RSX12032M16Z2	★	32	17.0	M16	63	40	5	23	10	24	2	0.2
RSX12040M16Z3	★	40	17.0	M16	63	40	5	23	10	24	3	0.3

Modular Head Fine Pitch - METRIC										Insert: RDET12		
Catalog Number	Stock	Dimensions (mm)								No. of Teeth	Weight (kg)	
		ϕD_c	ϕD_1	M	L	L_f	L_1	L_2	W			h
RSXF10025M12Z3	★	25	12.5	M12	56	35	5	21	10	19	3	0.1
RSXF10032M16Z4	★	32	17.0	M16	63	40	5	23	10	24	4	0.2
RSXF12032M16Z3	★	30	17.0	M16	63	40	5	23	10	24	3	0.2
RSXF12040M16Z4	★	32	17.0	M16	63	40	5	23	10	24	4	0.3

★ Worldwide Warehouse Item

Inserts are not included.

Insert & Parts Information



NEW

Inserts	P	K	M	S	Dimensions		
	ACP200	ACK300	ACM100	ACM200	ACM300	I.C.	Thickness
RDET10T3M0EN-G	●	●	●	●	●	0.394	0.156
RDET10T3M0EN-H	●	●	●	●	●	0.472	0.187
RDET1204M0EN-G	●	●	●	●	●	0.629	0.256
RDET1204M0EN-H	●	●	●	●	●		
RDET1606M0EN-G	●	●	●	●	●		
RDET1606M0EN-H	●	●	●	●	●		

●: U.S.A. Stock Item

Arbor



Modular Head Identification Details

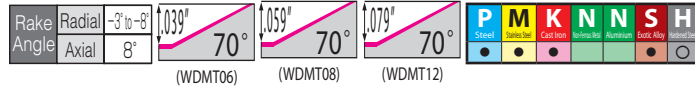
RSX F 10 025 M12 Z3

(1) Cutter Series (2) Pitch Type (3) Insert Size (4) Diameter (5) Mounting Screw (6) No. of Teeth

Hardware			
Spanner	Screw	Recommended Tightening Torque (N x m)	Applicable Head
TRDR15IP	BFTX03584IP	3.0	RSX10000M
	BFTX0409IP	3.0	RSX12000M



MSX Series



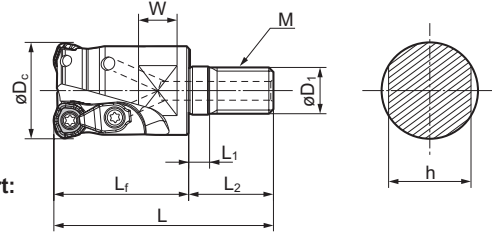
MSX Ultra-high speed, high efficiency machining endmill



Applicable Insert:
WDMT06

Applicable Insert:
WDMT08

Applicable Insert:
WDMT12



Arbor



Modular Head - INCH		Insert: WDMT06 Type									
Catalog Number	Stock	Dimensions (in.)									No. of Teeth
		ØD _c	ØD ₁	M	L	L _f	L ₁	L ₂	W	h	
MSX20750M10Z3	○	0.750	0.413	M10	1.929	1.181	0.197	0.748	0.315	0.591	3
MSX21000M12Z3	○	1.000	0.492	M12	2.205	1.378	0.197	0.827	0.394	0.748	3

Modular Head - INCH		Insert: WDMT08 Type									
Catalog Number	Stock	Dimensions (in.)									No. of Teeth
		ØD _c	ØD ₁	M	L	L _f	L ₁	L ₂	W	h	
MSX31000M12Z2	○	1.000	0.492	M12	2.205	1.378	0.197	0.827	0.394	0.748	2
MSX31250M16Z3	○	1.250	0.669	M16	2.480	1.575	0.197	0.906	0.394	0.945	3

Modular Head - METRIC		Insert: WDMT06 Type									
Catalog Number	Stock	Dimensions (in.)									No. of Teeth
		ØD _c	ØD ₁	M	L	L _f	L ₁	L ₂	W	h	
MSX 06016M08Z2	★	16	8.5	M8	42	25	5	17	8	13	2
MSX 06018M08Z2	★	18	8.5	M8	42	25	5	17	8	13	2
MSX 06020M10Z3	★	20	10.5	M10	49	30	5	19	8	15	3
MSX 06022M10Z3	★	22	10.5	M10	49	30	5	19	8	15	3
MSX 06025M12Z3	★	25	12.5	M12	56	35	5	21	10	19	3

Modular Head - METRIC		Insert: WDMT08 Type									
Catalog Number	Stock	Dimensions (in.)									No. of Teeth
		ØD _c	ØD ₁	M	L	L _f	L ₁	L ₂	W	h	
MSX 08025M12Z2	★	25	12.5	M12	56	35	5	21	10	19	2
MSX 08028M12Z2	★	28	12.5	M12	56	35	5	21	10	19	2
MSX 08030M16Z3	★	30	17.0	M16	63	40	5	23	10	24	3
MSX 08032M16Z3	★	32	17.0	M16	63	40	5	23	10	24	3
MSX 08035M16Z3	★	35	17.0	M16	63	40	5	23	10	24	3

Modular Head - METRIC		Insert: WDMT12 Type									
Catalog Number	Stock	Dimensions (in.)									No. of Teeth
		ØD _c	ØD ₁	M	L	L _f	L ₁	L ₂	W	h	
MSX 12032M16Z2	★	32	17.0	M16	63	40	5	23	10	24	2
MSX 12035M16Z2	★	35	17.0	M16	63	40	5	23	10	24	2
MSX 12040M16Z3	★	40	17.0	M16	63	40	5	23	10	24	3

○ Available 1st Quarter 2017

Insert	Insert Dimensions (in)						W	R	t	Max Depth of Cut (In.)
	ACP200	ACP300	ACK200	ACK300	ACM200	ACM300				
WDMT0603ZDTR	●	●	●	●	●	●	.250	.0591	.1181	.039
WDMT0804ZDTR	●	●	●	●	●	●	.335	.0787	.1575	.059
WDMT1205ZDTR	●	●	●	●	●	●	.472	.0787	.1969	.079
WDMT1406ZDTR	●	●	●	●	●	●	.551	.0787	.2362	.098
WDMT0603ZDTR-H	●	●	●	●	●	●	.250	.0591	.1181	.039
WDMT0804ZDTR-H	●	●	●	●	●	●	.335	.0787	.1575	.059
WDMT1205ZDTR-H	●	●	●	●	●	●	.472	.0787	.1969	.079
WDMT1406ZDTR-H	●	●	●	●	●	●	.551	.0787	.2362	.098

● USA stocked item

★ Worldwide Warehouse Item

Hardware						
Wrench	Screws	Clamp	C ring	Clamp Screw	Recommended Tightening Torque (N*m)	Applicable Head
TRDR08IP	BFTX02505IP BFTX0306IP	-	-	-	1.5	MSX06000M
TRDR15IP	BFTX0409IP	CCH3.5	CR3	BFTX03510IP08 BFTX03510IP15	2.0 3.0	MSX08000M MSX12000M

Modular Head Identification

MSX 06 016 M08 Z2

(1) Cutter Series (2) Insert Size (3) Diameter (4) Mounting Screw (5) No. of Flutes

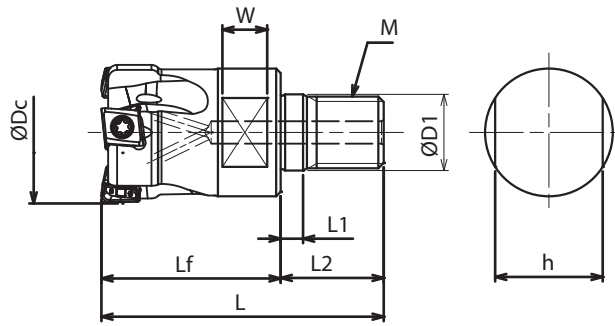
Performance

Tool: MSX12032EM Insert: WDMT1205ZDTR-ACP200 *Actual measurement for an integrated endmill type.

Helical Boring	Contour Machining
Work material : 1015 Cutting Conditions : v _c =558 SFM n=1,700min ⁻¹ f _z =.059 IPT D.O.C.=.032" Radial=.276" OH=5.315"	Work material : 4137 Cutting Conditions : v _c =492 SFM n=1,500min ⁻¹ f _z =.039 IPT D.O.C.=.032" Radial=.354"~.472" OH=5.315"
Results: Some chattering but cut edge looks good and provides good chip control. 20% better efficiency than competitor A. (Chipping found on Comp A's tool)	Results: 50% faster feed rate than competitor B. (Comp B's tool failed to perform at this rate)



NEW



Modular Head - INCH											Insert: L Nex08 Type	
Catalog Number	Stock	Dimensions (in.)									No. of Teeth	
		ØD _c	ØD ₁	M	L	L _f	L ₁	L ₂	W	h		
TSXF30750M10Z3	○	0.750	0.413	M10	1.929	1.181	0.197	0.748	0.315	0.591	3	
TSXF31000M12Z4	○	1.000	0.492	M12	2.205	1.378	0.197	0.827	0.394	0.748	4	
TSXF31250M16Z5	○	1.250	0.669	M16	2.480	1.575	0.197	0.906	0.394	0.945	5	
TSXF31500M16Z6	○	1.500	0.669	M16	2.480	1.575	0.197	0.906	0.394	0.945	6	

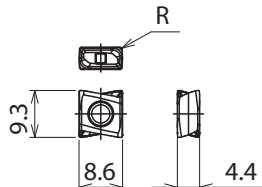
Modular Head - INCH											Insert: L Nex13 Type	
Catalog Number	Stock	Dimensions (in.)									No. of Teeth	
		ØD _c	ØD ₁	M	L	L _f	L ₁	L ₂	W	h		
TSX41000M12Z2	○	1.000	0.492	M12	2.205	1.378	0.197	0.827	0.394	0.748	2	
TSX41250M16Z3	○	1.250	0.669	M16	2.480	1.575	0.197	0.906	0.394	0.945	3	
TSX41500M16Z4	○	1.500	0.669	M16	2.480	1.575	0.197	0.906	0.394	0.945	4	

○ Available 1st Quarter 2017

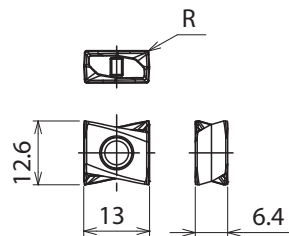
Inserts	P					K					M					S					R
	ACP100	ACP200	ACP300	ACK200	ACK300	ACM200	ACM300	ACP100	ACP200	ACP300	ACK200	ACK300	ACM200	ACM300	ACP100	ACP200	ACP300	ACK200	ACK300	ACM200	
Cat. No.																					
LNEX080404PNER-L	○	○	○	○	○	○	○	○	○	○	○	○	○	○	○	○	○	○	○	○	.016
LNEX080404PNER-G	○	○	○	○	○	○	○	○	○	○	○	○	○	○	○	○	○	○	○	○	.016
LNEX080408PNER-L	○	○	○	○	○	○	○	○	○	○	○	○	○	○	○	○	○	○	○	○	.031
LNEX080408PNER-G	○	○	○	○	○	○	○	○	○	○	○	○	○	○	○	○	○	○	○	○	.031
LNEX080412PNER-G	○	○	○	○	○	○	○	○	○	○	○	○	○	○	○	○	○	○	○	○	.047
LNEX080416PNER-G	○	○	○	○	○	○	○	○	○	○	○	○	○	○	○	○	○	○	○	○	.063
LNEX130604PNER-L	○	○	○	○	○	○	○	○	○	○	○	○	○	○	○	○	○	○	○	○	.016
LNEX130604PNER-G	○	○	○	○	○	○	○	○	○	○	○	○	○	○	○	○	○	○	○	○	.016
LNEX130608PNER-L	○	○	○	○	○	○	○	○	○	○	○	○	○	○	○	○	○	○	○	○	.031
LNEX130608PNER-G	○	○	○	○	○	○	○	○	○	○	○	○	○	○	○	○	○	○	○	○	.031
LNEX130608PNER-H	○	○	○	○	○	○	○	○	○	○	○	○	○	○	○	○	○	○	○	○	.031
LNEX130616PNER-G	○	○	○	○	○	○	○	○	○	○	○	○	○	○	○	○	○	○	○	○	.047
LNEX130616PNER-H	○	○	○	○	○	○	○	○	○	○	○	○	○	○	○	○	○	○	○	○	.047
LNEX130624PNER-G	○	○	○	○	○	○	○	○	○	○	○	○	○	○	○	○	○	○	○	○	.094
LNEX130624PNER-H	○	○	○	○	○	○	○	○	○	○	○	○	○	○	○	○	○	○	○	○	.094
LNEX130632PNER-G	○	○	○	○	○	○	○	○	○	○	○	○	○	○	○	○	○	○	○	○	.126
LNEX130632PNER-H	○	○	○	○	○	○	○	○	○	○	○	○	○	○	○	○	○	○	○	○	.126

○ Available 1st Quarter 2017

LNEX08
Max. DOC 8mm (.315")



LNEX13
Max. DOC 12 mm (.473")



Arbor



Modular Head Identification Details

TSX F 3 0750 M12 Z3

(1)	(2)	(3)	(4)	(5)	(6)
Cutter Series	Pitch Type	Insert Size	Diameter	Mounting Screw	No. of Teeth
		3: 08			
		4: 13			

Indexable Milling
Shoulder Milling
Face Milling
High Feed Milling
Multi-purpose
Modular Tooling
UFO & SumiMill
Discontinued

