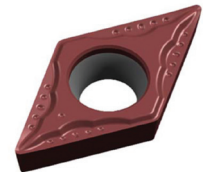


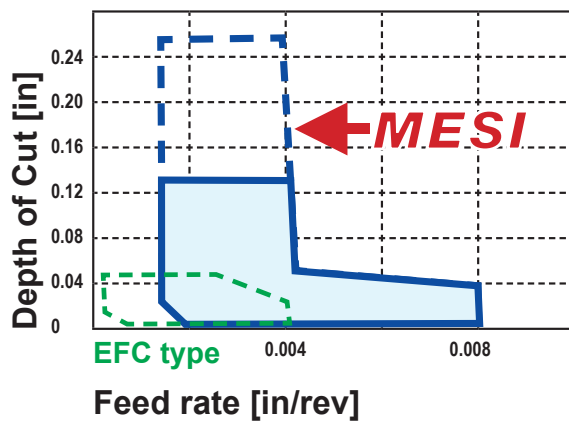
INTRODUCING THE LATEST IN SWISS TURNING INSERTS **MESI** type for wide range DOC

Features & Benefits

- Better chip control in wide range D.O.C. for bar feeder machine.
- Sharp Cutting edge provides lower cutting force.
- Suitable for medical parts and high precision parts machining.

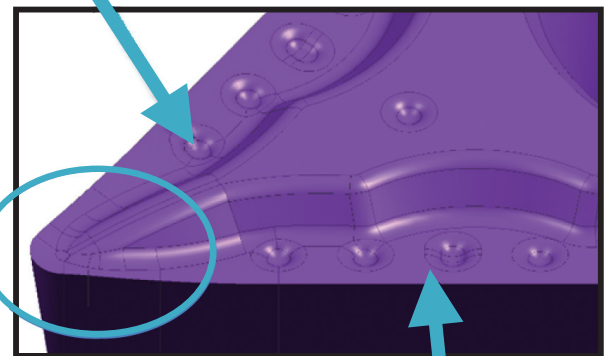


Application Range



Dimple to reduce cutting temperature

Sharp cutting edge
 nose: 15°
 main edge: 8°



Wavy cutting edge provide better chip control for copying

MESI

Sumitomo Cat. No.	AC510U	AC520U	AC530U	AC610M	AC630M	I.C.	Thickness	Nose Radius	Hole Dia.
CCGT32.50MESI	•	•	•	•	•	.375	.156	.0039	.1732
CCGT32.50.5MESI	•	•	•	•	•	.375	.156	.0078	.1732
CCGT32.51MESI	•	•	•	•	•	.375	.156	.0156	.1732
DCGT32.50MESI	•	•	•	•	•	.375	.156	.0039	.1732
DCGT32.50.5MESI	•	•	•	•	•	.375	.156	.0078	.1732
DCGT32.51MESI	•	•	•	•	•	.375	.156	.0156	.1732
DCGT32.52MESI	•	•	•	•	•	.375	.156	.0312	.1732
VCGT220MESI	•	•	•	•	•	.250	.125	.0039	.110
VCGT220.5MESI	•	•	•	•	•	.250	.125	.0078	.110
VCGT221MESI	•	•	•	•	•	.250	.125	.0156	.110
VCGT222MESI	•	•	•	•	•	.250	.125	.0312	.110
VCGT330MESI	•	•	•	•	•	.375	.1875	.0039	.1732
VCGT330.5MESI	•	•	•	•	•	.375	.1875	.0078	.1732
VCGT331MESI	•	•	•	•	•	.375	.1875	.0156	.1732

The "M" in "MESI" is standard nomenclature for a negative nose radius tolerance.



SUMITOMO

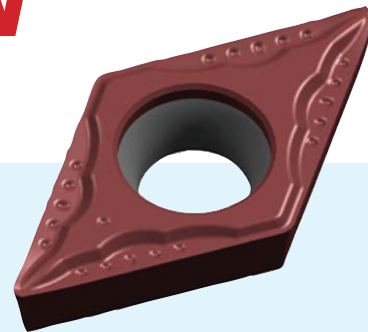
CARBIDE - CBN - DIAMOND

Phone: (800) 950-5202

Fax: (847) 635-7866

www.sumicarbide.com

**INTRODUCING THE LATEST IN
SWISS TURNING INSERTS**



MESI type for a wide DOC range

www.sumicarbide.com

(847) 635-7866

FAX

(800) 950-5202

PHONE

1001 Business Center Drive
Mount Prospect, IL 60056-2181

CARBIDE - CBN - DIAMOND

SUMITOMO

