

Custom Engineered Tooling



**Global Support.
Global Solutions.**

Sumitomo Electric Carbide Manufacturing, Inc. Overview



**Sumitomo Electric Carbide
Manufacturing, Inc. - SCM Ohio**
Grand River, OH

- Designer & Builder of special inserted cutting tools for over 40 years in U.S.A.
- SCM Ohio acquired by Sumitomo in July 2007 & located in Grand River near Cleveland, Ohio with over 26,000 square feet of manufacturing space
- Specializes in providing part-specific special inserted tooling for a wide range of applications

Features & Benefits

A. Unparalleled Service:

Sumitomo's Engineered Specials Division will be your one stop for tooling: Not only do we customize the tool, but we will provide the support, service and installation to best assist in meeting the customer's needs.



B. Trusted Family of High Performance Inserts:

Sumitomo's Engineered Specials Division incorporates our extensive insert offering of high performance geometries, grades and coatings.

C. Customized Tooling to Meet the Part's Unique Requirements:



Turning / Boring Solutions

GND Polygon Shank Style Series:

- ISO Polygon shank holder
- Economic modular cassettes
- Compact and stable construction
- Interface repeatability of $\pm 2 \mu\text{m}$
- Internal coolant supply directly from the holder to the cutting edge



Product Range - Holders

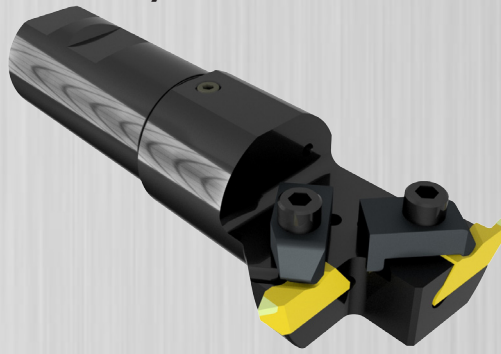
Application	Series	Shape	Grooving Width (mm)					Grooving Depth (mm)
			2	3	4	5	6	
External Grooving	PSC_0M00R/L Straight		2	3				12
					4	5	6	18
	PSC_0M90R/L L-Style		2	3				12
					4	5	6	18

Note: 2mm Grooving width - please use only for grooving not for turning!

Custom Back Turn/Plunge Turning Tool

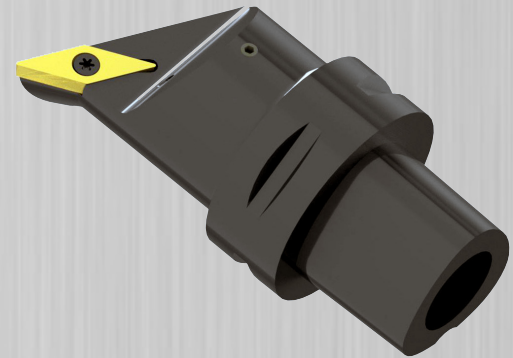


Groover / Threader w/ CBN Inserts

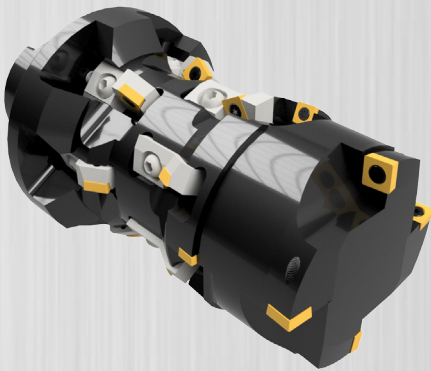


Boring Tool

Custom Tool with ISO-standard Inserts

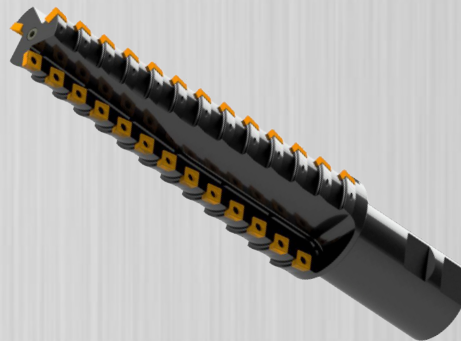


Rough / Finish Chamfer Connecting Rod

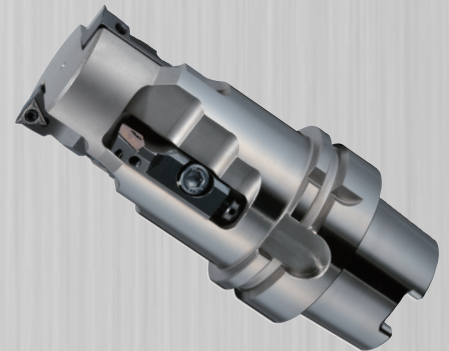


Tapered Boring Bar

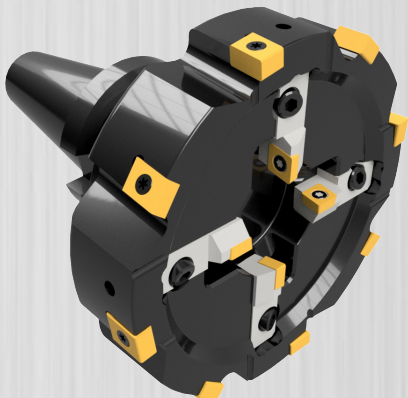
Custom Tool with Sumitomo Standard Inserts



Multi - Function Boring Quill



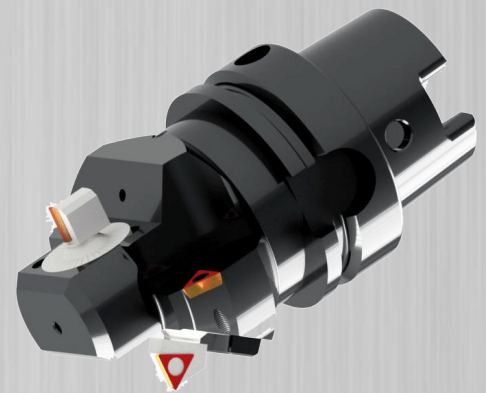
OD Turn / Facing Hollow Mill



Hollow Mill w/ GND Inserts



Multi- Function Fine Boring & Chamfering Tool



Drilling Solutions

**SMD Drill w/ Multi-Effective
Chamfer Insert
- Long Projection**



SMD Drill / Bore / Chamfer

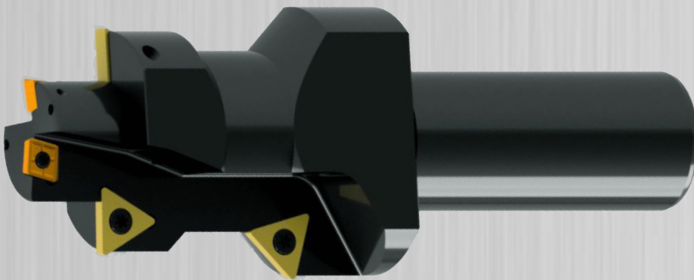


PDL Multi-Step Drill

Custom Tool with
Standard Inserts



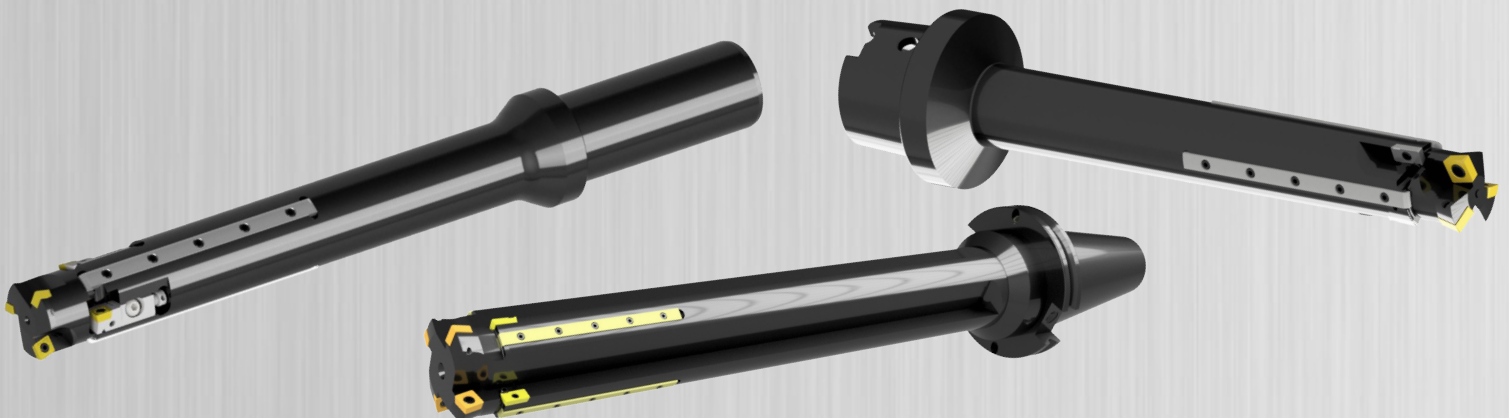
**Custom Drill
Counter Bore / Chamfering Tool**



Custom Drill / Chamfer w/ WDXT Inserts

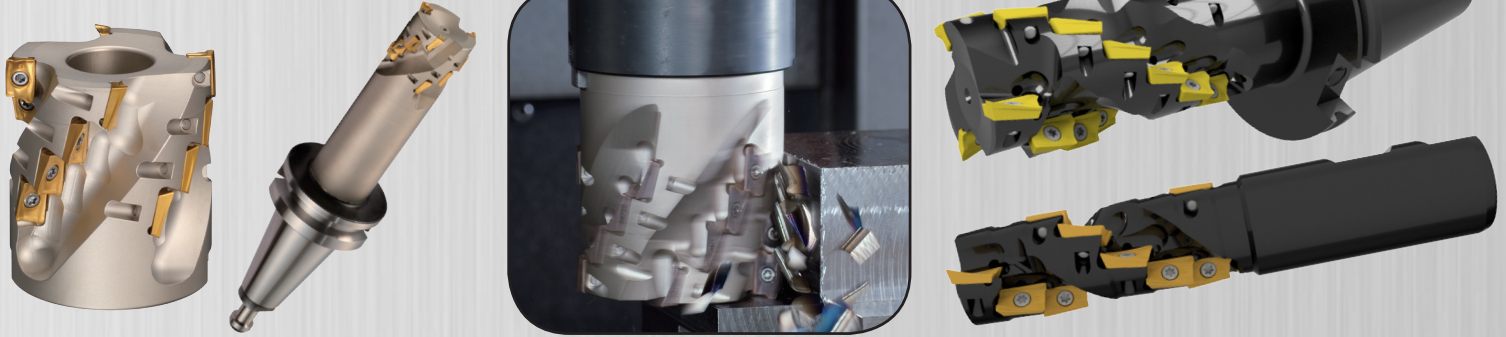


Long Reach Core / Finish Bore Tools w/ Carbide Guide Pads

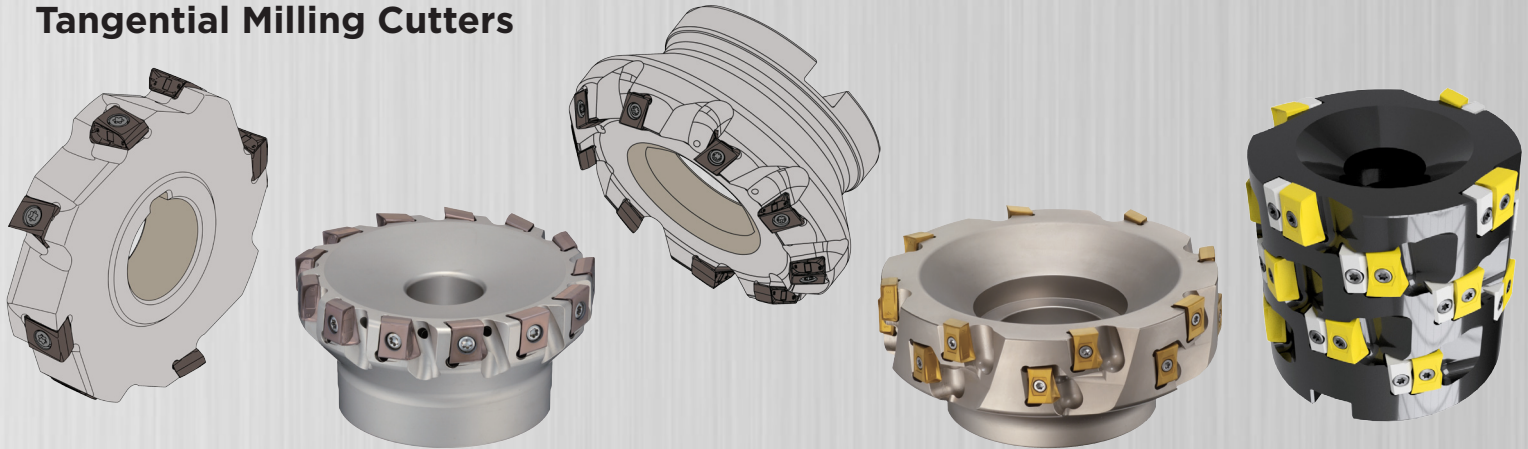


Milling Solutions

WRX: Custom Long Edge Shoulder Mill



Tangential Milling Cutters



Goalmill: Cast Iron Finishing Face Mill w/ Adjustable Cartridges



FMU: High Speed Finishing of Cast Iron w/ CBN Inserts

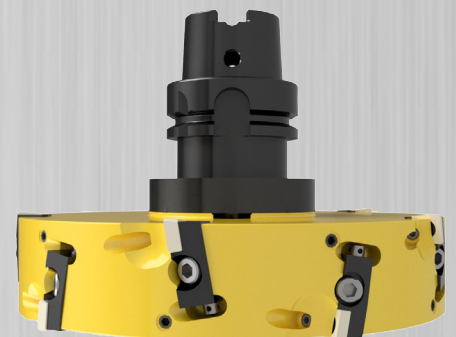


HF PCD Milling Cutter:



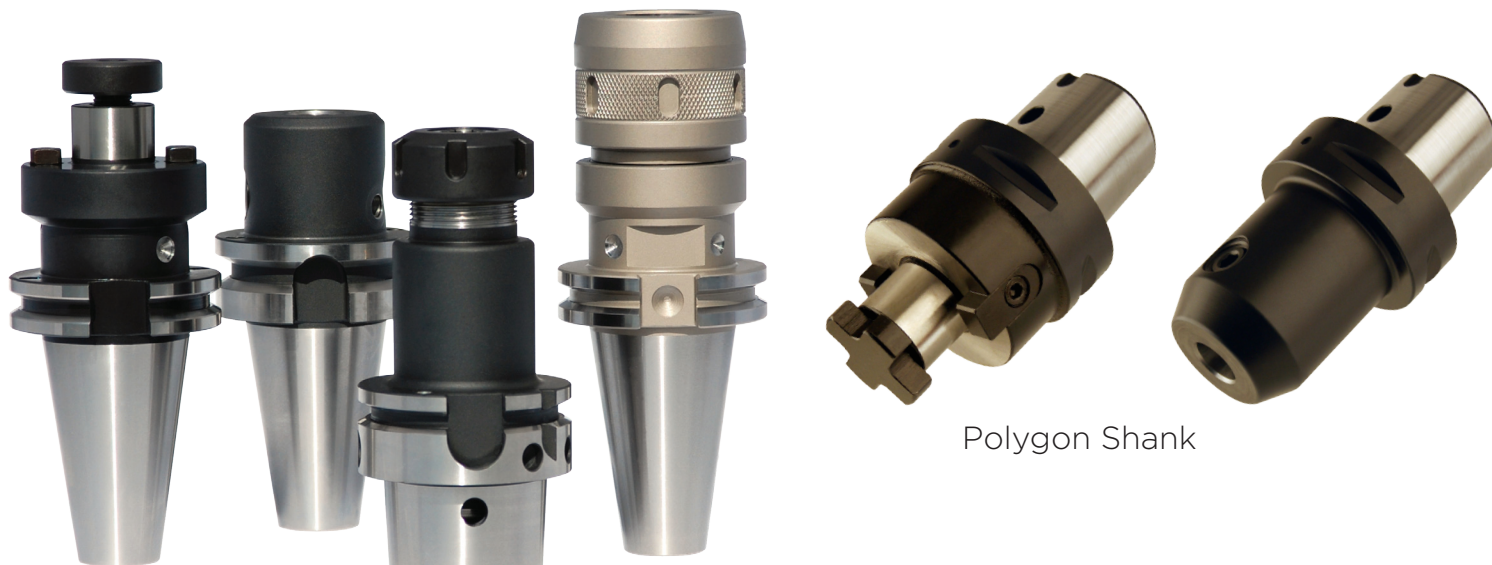
Unique Wedge Clamping Design

RF: Front / Back Finish Milling w/ Left & Right Hand Inserts



Aluminum Body

Available Connections for Custom Tools



BT (30 & 40)

HSK (63 & 100)

CAT (40 & 50)

Polygon Shank

**Additional connections available -
Inquire with your sales representative**



CARBIDE - CBN - DIAMOND

Sumitomo Electric Carbide, Inc. Headquarters

1001 Business Center Drive
Mount Prospect, IL 60056-2181
P.O. Box 545, Mt. Prospect, IL 60056-0545
Phone: (800) 950-5202
Phone: (847) 635-0044
Fax: (847) 635-7866
<http://www.sumicarbide.com>

Sumitomo Electric Carbide Manufacturing, Inc. - SCM Ohio

210 River Street
Grand River, OH 44045
Phone: (440) 354-0600
Fax: (440) 354-6372
URL: <http://sumicarbide.com/product/scmohio>

Sumitomo Electric Carbide Manufacturing, Inc. - SCM WI

5635 S. Westridge Drive
New Berlin, WI 53151
Phone: (800) 950-5202

Indiana Branch

595 S. Emerson Avenue
Suite 100
Greenwood, IN 46143
Phone: (317) 859-1601

Torrance Branch

21241 South Western Avenue
Suite 120
Torrance, CA 90501
Phone: (800) 950-5202
Fax: (310) 782-0211

Sumitomo Carbide Canada, Inc.

150 Research Lane
Unit #210
Guelph, Ontario N1G 4T2
Canada
Phone: (519) 265-6050
Phone: (844) 211-6050

Detroit Branch

14496 Sheldon Road #230
Plymouth, MI 48170
Phone: (800) 239-5177
Phone: (734) 451-0200
Fax: (734) 451-5338

Huntsville Branch

6700 Odyssey Drive
Suite 211
Huntsville, AL 35806
Phone: (256) 971-1203
Fax: (256) 971-1205

For more information log onto:
www.sumicarbide.com